



The information in this document is subject to change without notice and should not be construed as a commitment by ABB. ABB assumes no responsibility for any errors that may appear in this document.

Except as may be expressly stated anywhere in this document, nothing herein shall be construed as any kind of guarantee or warranty by ABB for losses, damages to persons or property, fitness for a specific purpose or the like.

In no event shall ABB be liable for incidental or consequential damages arising from use of this document.

This document and parts thereof must not be reproduced or copied without ABB's written permission, and contents thereof must not be imparted to a third party nor be used for any unauthorized purpose. Contravention will be prosecuted.

Additional copies of this document may be obtained from ABB at its then current charge.

© Copyright 2004 ABB ALL right reserved.

ABB Automation Technologies AB
Robotics
SE-721 68 Västerås
Sweden

We reserve all rights in this document, and in the information contained therein. Reproduction, use or disclosure to third parties without express authority is strictly forbidden. © Copyright 2003 ABB

Latest revision:			Lab/Office:		Status: 2007-04-20	Plant: =	
					APPROVED	Location: + Manipulator	
						Sublocation: +	
Prepared by, date:	Approved by, date:				Document no.	Rev. Ind	Page 1
					3HAC025744-001	02	Next 2
							Total 21

COPYRIGHT page
Title page/cover sheet

Valid For:

This circuit diagram is valid for the following cable harness assemblies:

- 3HAC 024385-001 Manipulator harness axis 1-6 (IRB 6600 / 6640)
- 3HAC 024386-001 Manipulator harness axis 1-6 (IRB 6640 / 6650 / 6650S)
- 3HAC14940-1 rev 3 and later. Manipulator harness axis 1-4 (IRB 6600 ID / 6640 ID / 7600)
- 3HAC16331-1 rev 1 and later. Manipulator harness axis 1-4 (IRB 6640 ID / 6650 ID)
- 3HAC14139-1 Manipulator harness axis 5 (IRB 6600 / 6640 / 6650 / 6650S)
- 3HAC11440-1 Manipulator harness axis 5-6 (IRB 7600)
- 3HAC023717-001 Manipulator harness axis 5-6 (IRB 6600 ID / 6640 ID / 6650 ID)
- 3HAC15930-1 UL signal lamp (IRB 6600 / 6640 / 6650 / 6600 ID / 6640 ID / 6650 ID / 6650S / 7600)
- 3HAC12498-1 Pos SW 3 functions (IRB 6600 / 6640 / 6650 / 6600 ID / 6640 ID / 6650 ID / 6650S / 7600)
- 3HAC12587-1 Pos SW 2 functions (IRB 6600 / 6650 / 6600 ID / 6650 ID / 6650S / 7600)
- 3HAC15374-1 Fan (IRB 6600 / 6640 / 6650 / 6600 ID / 6640 ID / 6650 ID / 6650S / 6660 / 7600)
- 3HAC15390-1 Pos Sw/ Fan cable harness (IRB 6600 / 6600 ID / 7600)
- 3HAC16659-1 Pos Sw/ Fan cable harness (IRB 6650 / 6650 ID / 6650S)
- 3HAC023599-001 Fan cable harness (IRB 6600 / 6640 / 6650 / 6600 ID / 6640 ID / 6650 ID / 6650S / 6660 / 7600)
- 3HAC026733-001 Manipulator harness axis 1-6 (IRB 6660)
- 3HAC028206-001 UL signal lamp (IRB 6660)

See circuit diagram 3HAC13347-1 in the following cases:

- If IRB6600, 6650 or 6650S with 3HAC14940-1, 3HAC16331-1
- If cable harness 3HAC14940-1 rev 2 or earlier
- If cable harness 3HAC16331-1 rev 0

We reserve all rights in this document, and in the information contained therein. Reproduction, use or disclosure to third parties without express authority is strictly forbidden. © Copyright 2003 ABB

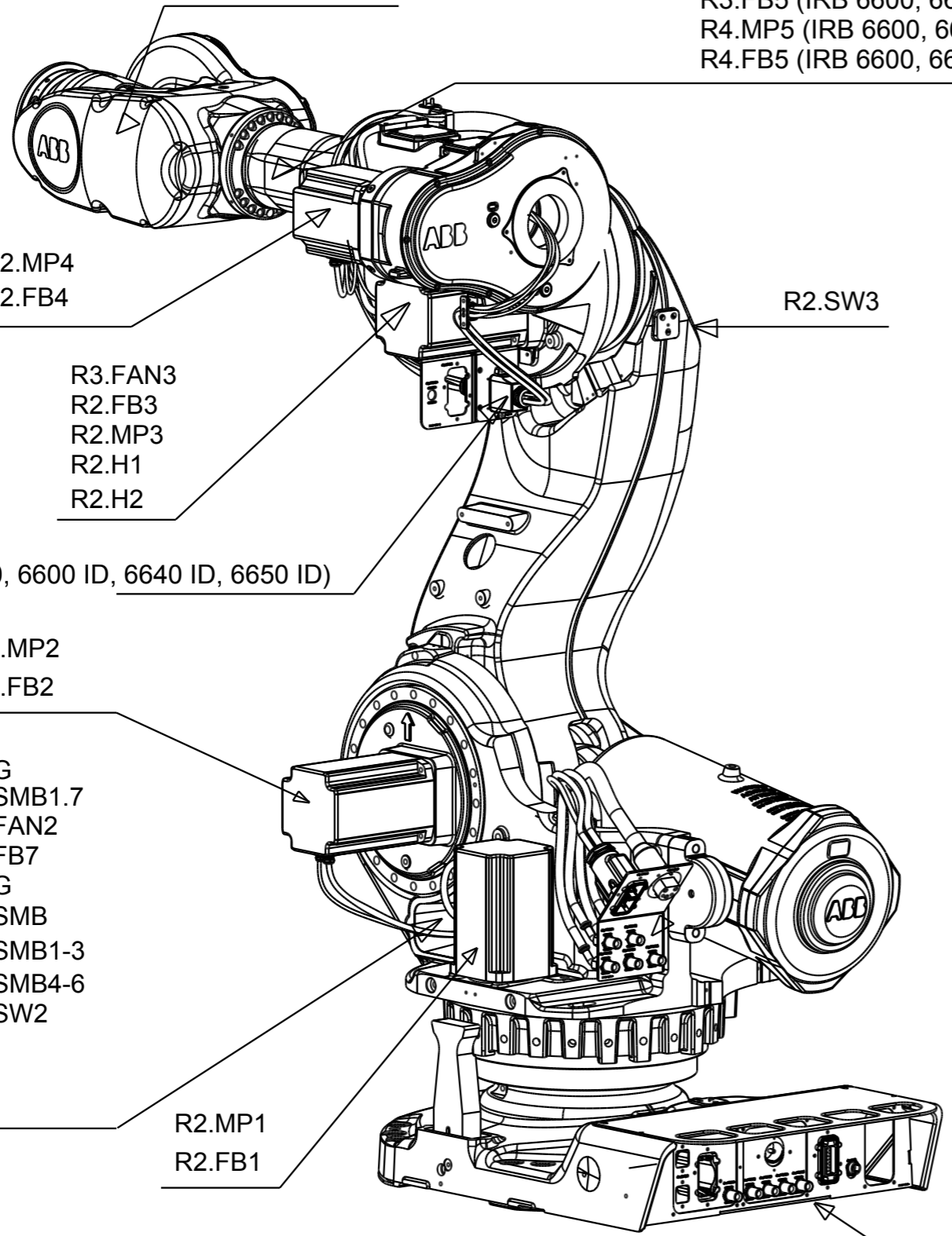
Latest revision:		ABB	Lab/Office:	Valid For Text view	Status: 2007-04-20	Plant: =	
					APPROVED	Location: + Manipulator	
Prepared by, date:					Document no.	Rev. Ind	Page 3
Approved by, date:					3HAC025744-001	02	Next 4
							Total 21

R3.FB5 (IRB 7600, 6600 ID, 6640 ID, 6650 ID)
 R3.MP5 (IRB 7600, 6600 ID, 6640 ID, 6650 ID)
 R3.MP6
 R3.FB6

R3.MP5 (IRB 6600, 6640, 6650, 6650S)
 R3.FB5 (IRB 6600, 6640, 6650, 6650S)
 R4.MP5 (IRB 6600, 6640, 6650, 6650S)
 R4.FB5 (IRB 6600, 6640, 6650, 6650S)

R2.M5/6
 (On IRB7600, 6600 ID,
 6640 ID, 6650 ID)

R1.MP



R2.MP4
 R2.FB4

R2.SW3

R3.FAN3
 R2.FB3
 R2.MP3
 R2.H1
 R2.H2

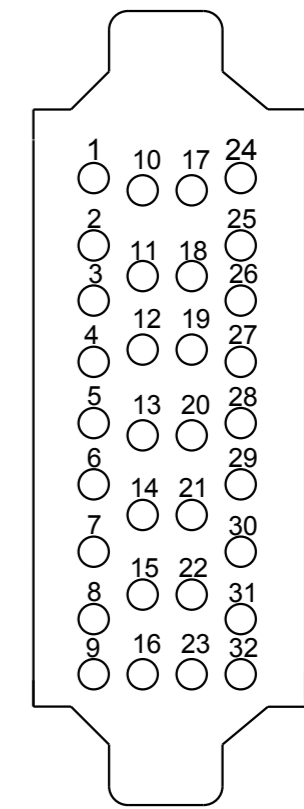
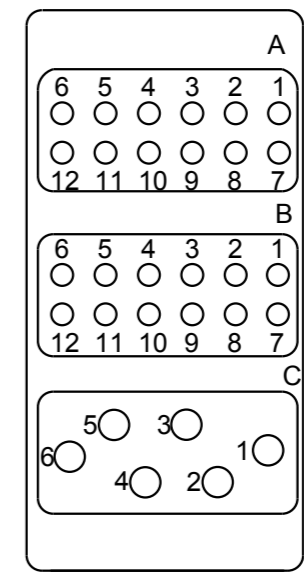
R2.M5/6 (IRB7600, 6600 ID, 6640 ID, 6650 ID)

R2.MP2
 R2.FB2

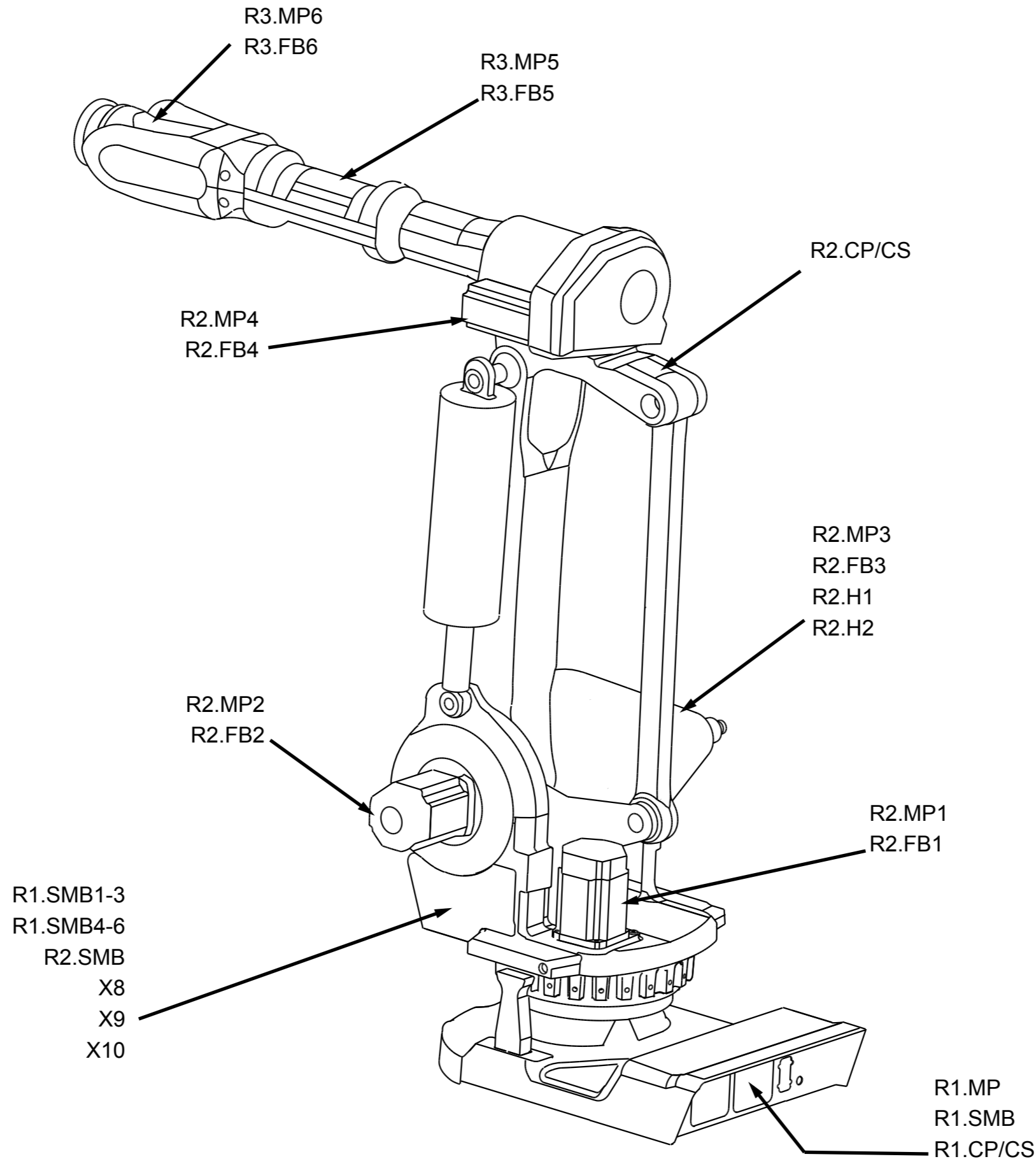
R1.G
 R1.SMB1.7
 R3.FAN2
 R2.FB7
 R2.G
 R2.SMB
 R1.SMB1-3
 R1.SMB4-6
 R2.SW2
 X8
 X9
 X10

R2.MP1
 R2.FB1

R1.MP
 R1.SMB
 R1.SW1
 R1.SW2/3



We reserve all rights in this document and in the information contained herein. Reproduction, use or disclosure to third parties without express authority is strictly forbidden. © Copyright 2003 ABB



We reserve all rights in this document and in the information contained therein. Reproduction, use or disclosure to third parties without express authority is strictly forbidden. © Copyright 2003 ABB


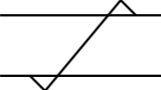
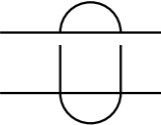
Latest revision:
 Prepared by, date: _____ Approved by, date: _____

ABB Lab/Office: _____

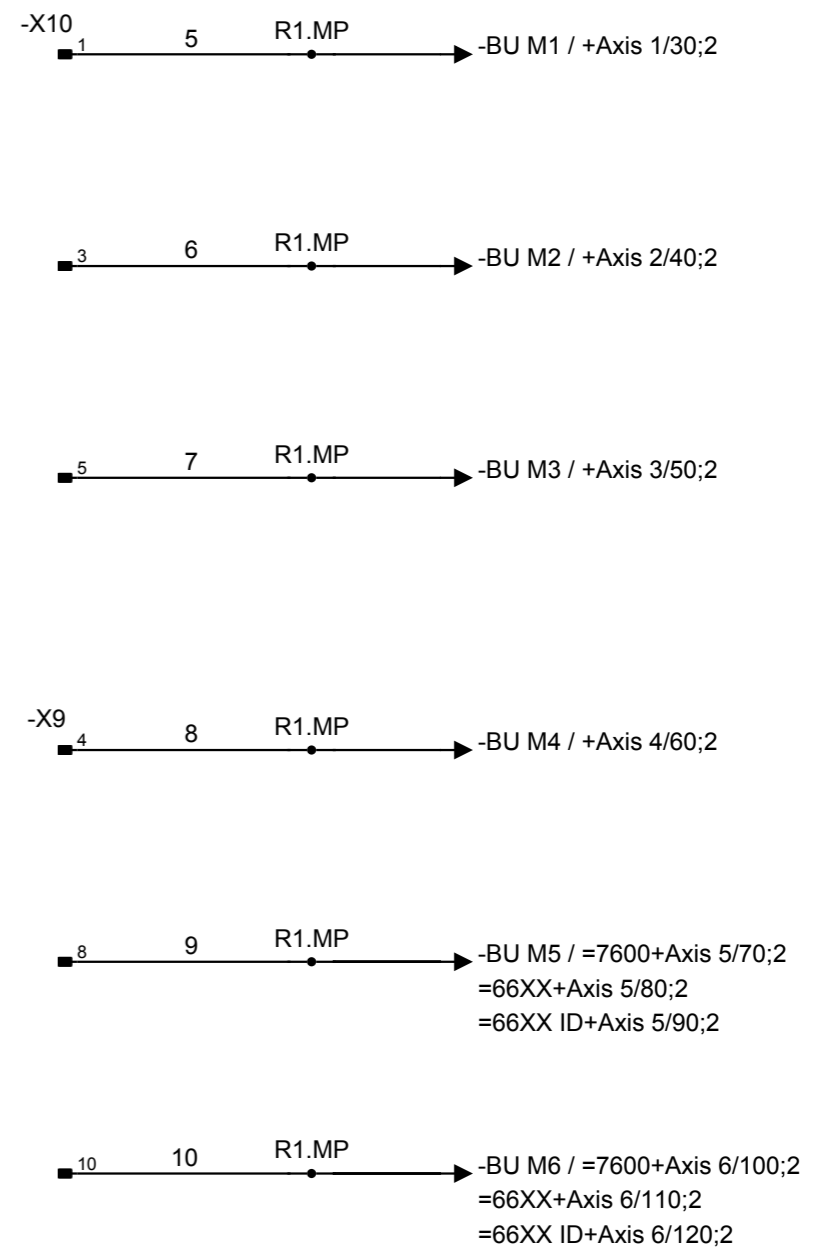
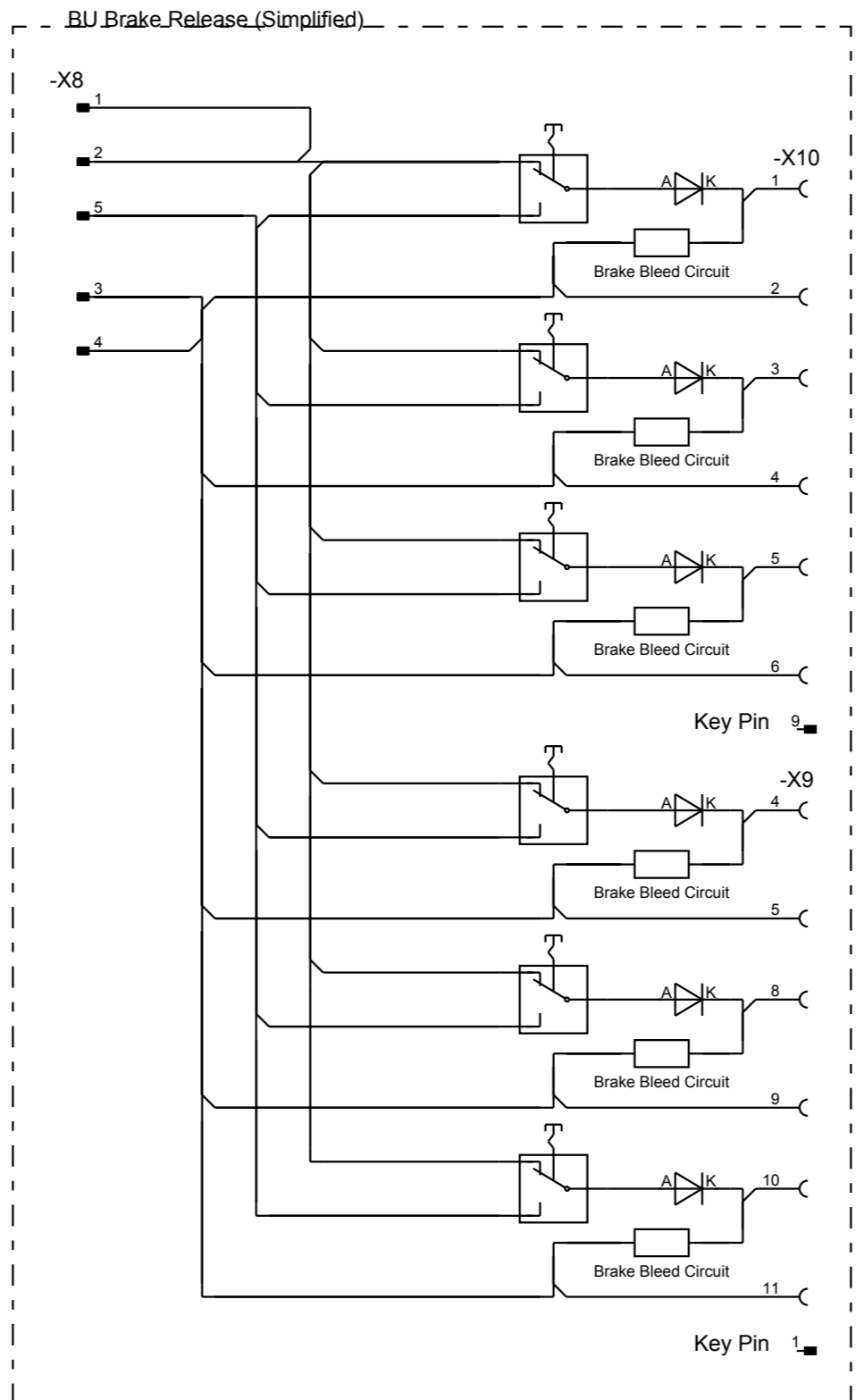
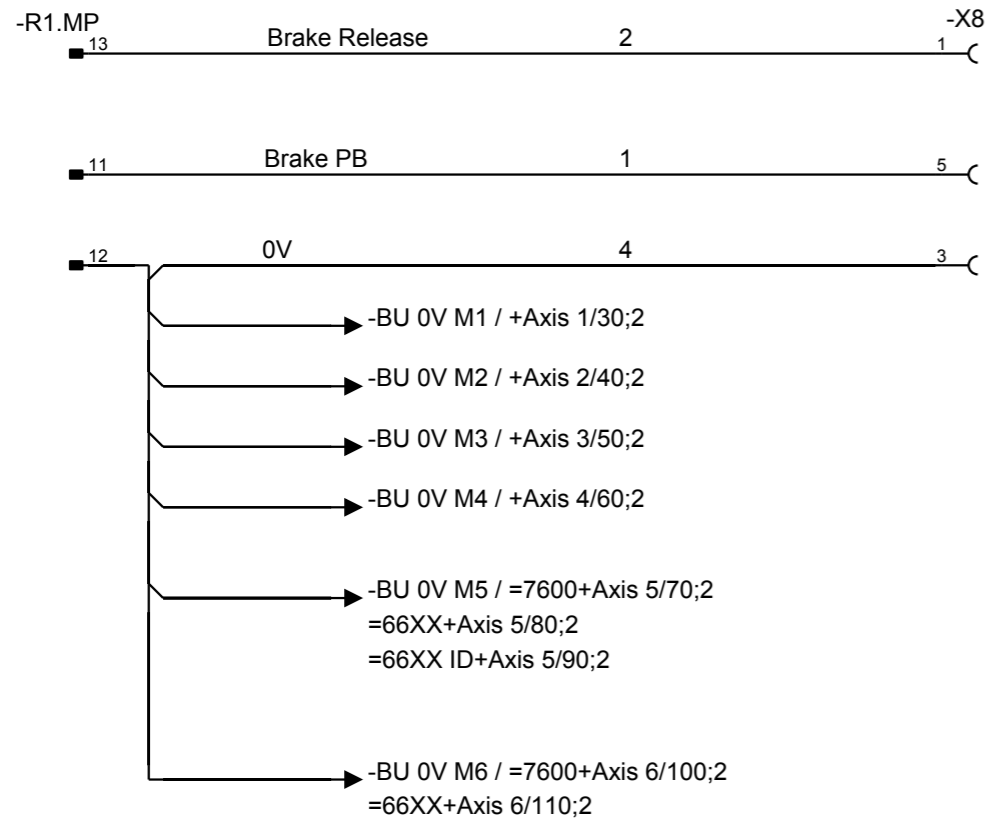
Connection point location
 IRB 6660

Status: APPROVED	Plant: = IRB6660	Location: + Manipulator	Sublocation: +
Document no. 3HAC025744-001	Rev. Ind 02	Page 5 Next 9 Total 21	

We reserve all rights in this document and in the information contained therein. Reproduction, use or disclosure to third parties without express authority is strictly forbidden. © Copyright 2003 ABB

1	2	3	4	5	6	7	8
M	Motor				Protective Earth		
B	Brake				Twisted wires		
PTC	Temp sensor (PTC- resistor)				Screened wires		
R	Resolver		XX		Any number i.e. 66XX can be 6600, 6640, 6660 or 6650		
G	Battery Pack						
BU	Brake Release Unit						
FB	Feedback unit						
SMB	Serial Measurment Board						
FAN	Fan						
SW	Position switch						
Keypin	Location pin to avoid mismatch						

We reserve all rights in this document and in the information contained therein. Reproduction, use or disclosure to third parties without express authority is strictly forbidden. © Copyright 2003 ABB



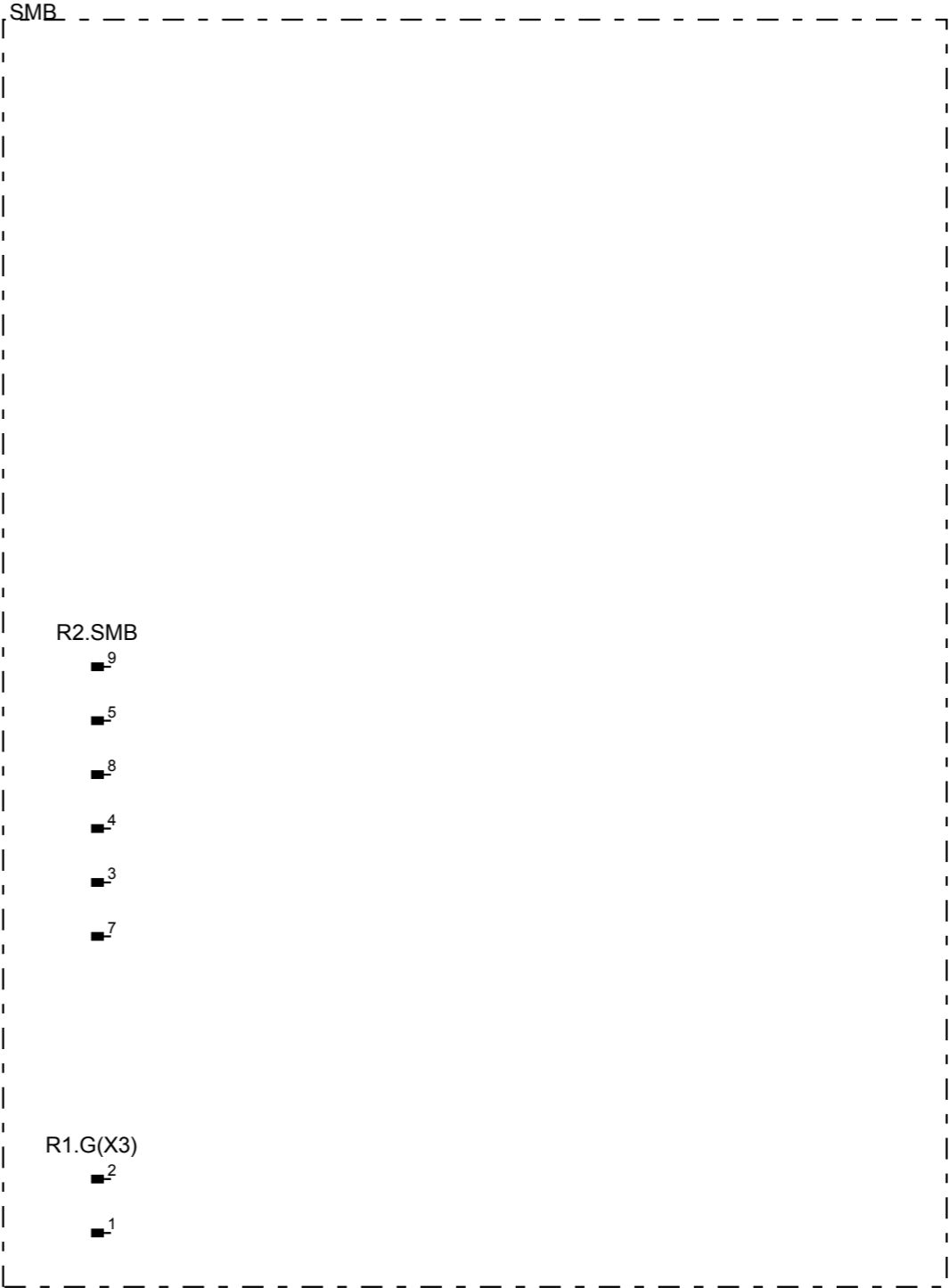
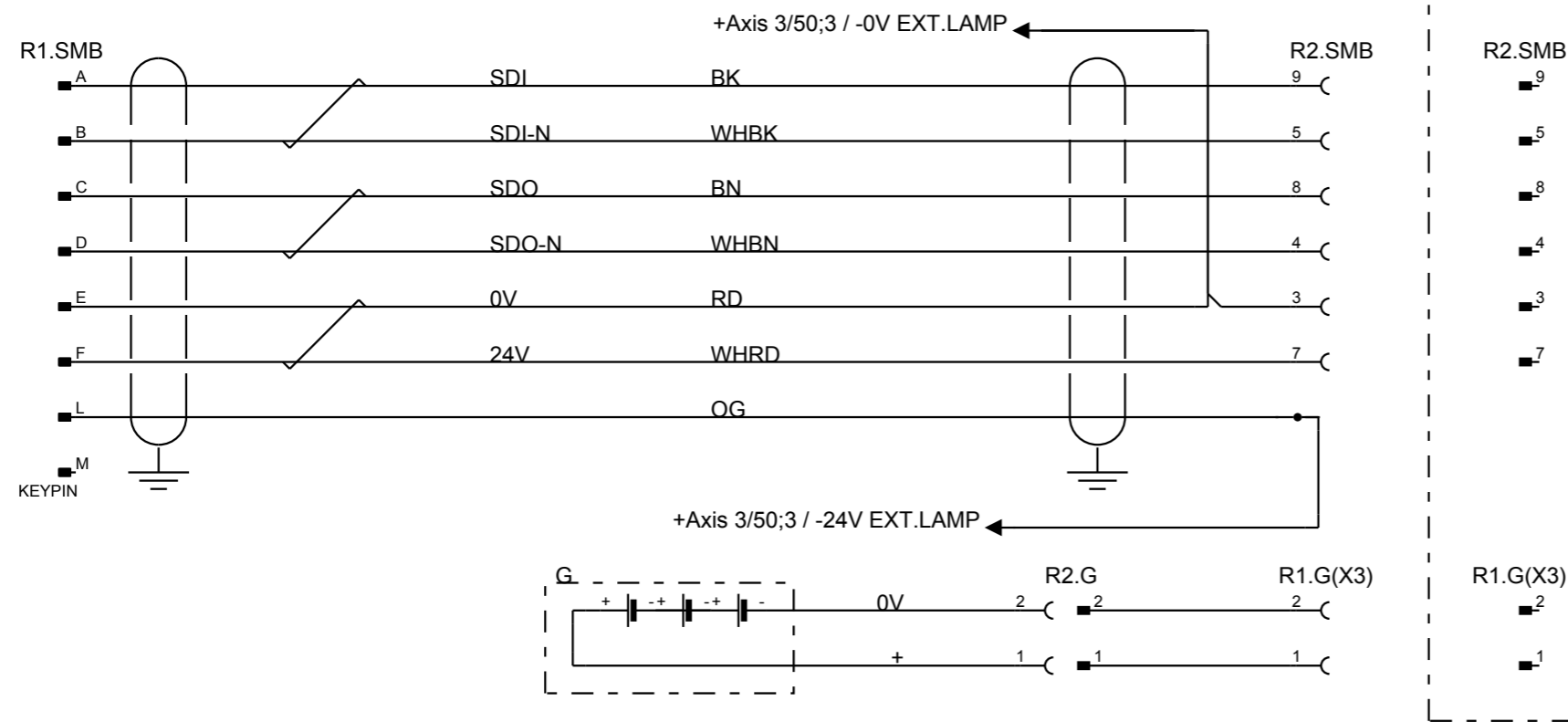
Latest revision:
 Prepared by, date: Approved by, date:

Brake Release

ABB Lab/Office:

Brake Release Unit
 IRB 66XX / 7600

Status: 2005-10-17	Plant: = 66XX/7600
APPROVED	Location: + BU
Document no. 3HAC025744-001	Sublocation: +
Rev. Ind 02	Page 10
	Next 20
	Total 21



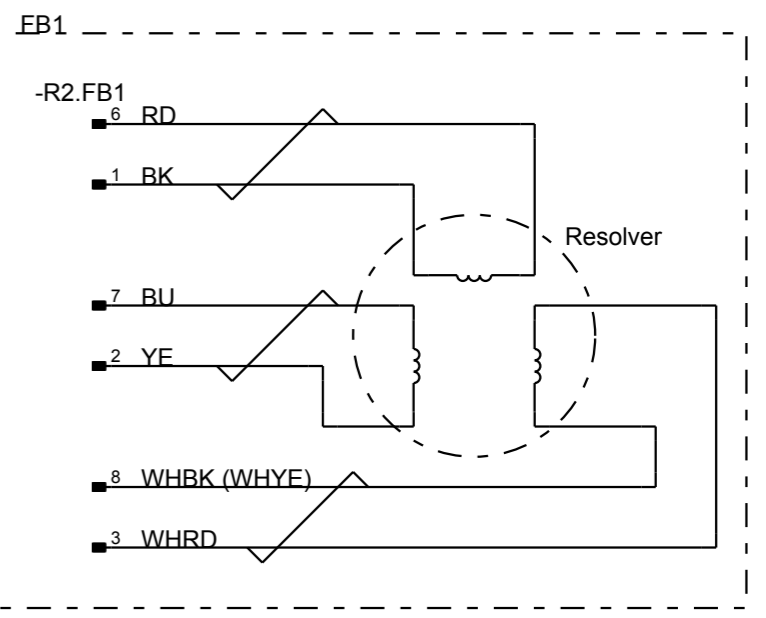
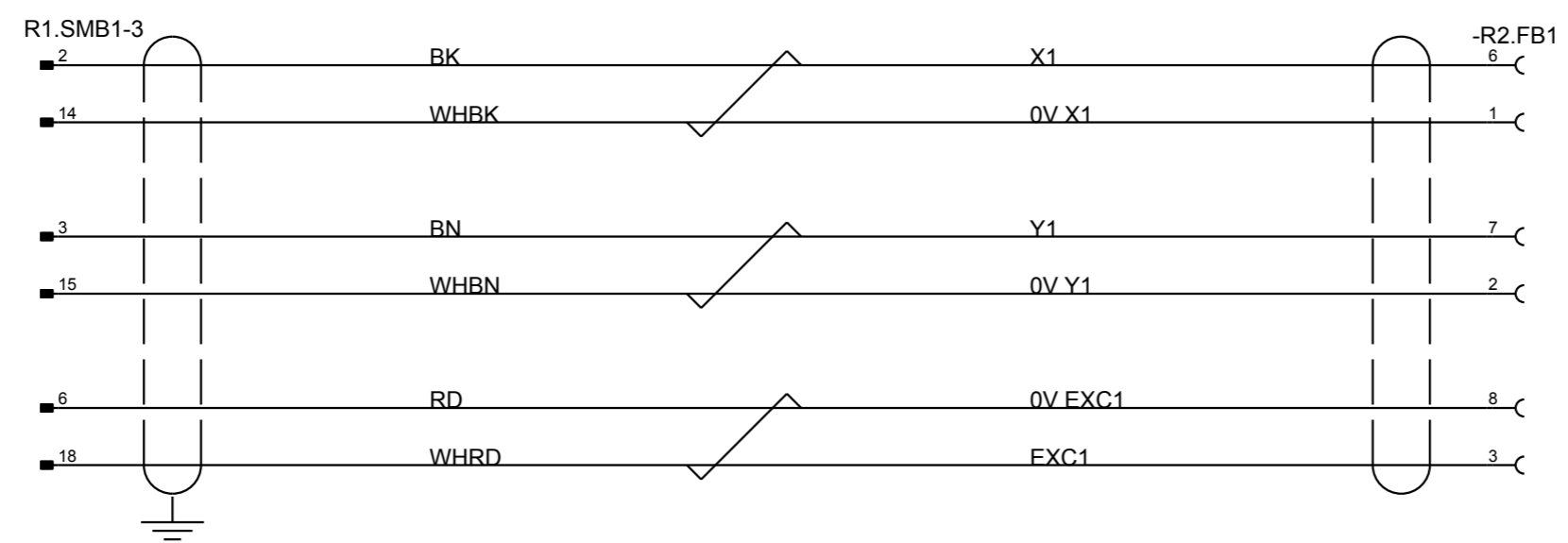
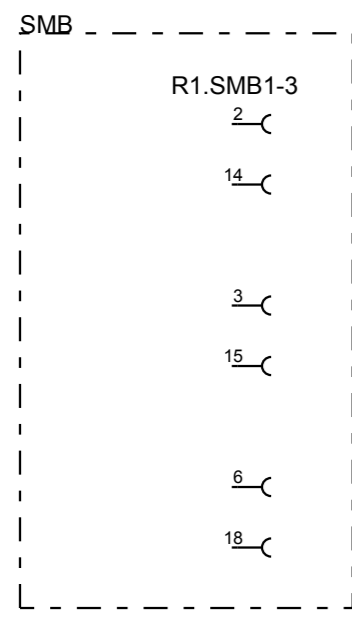
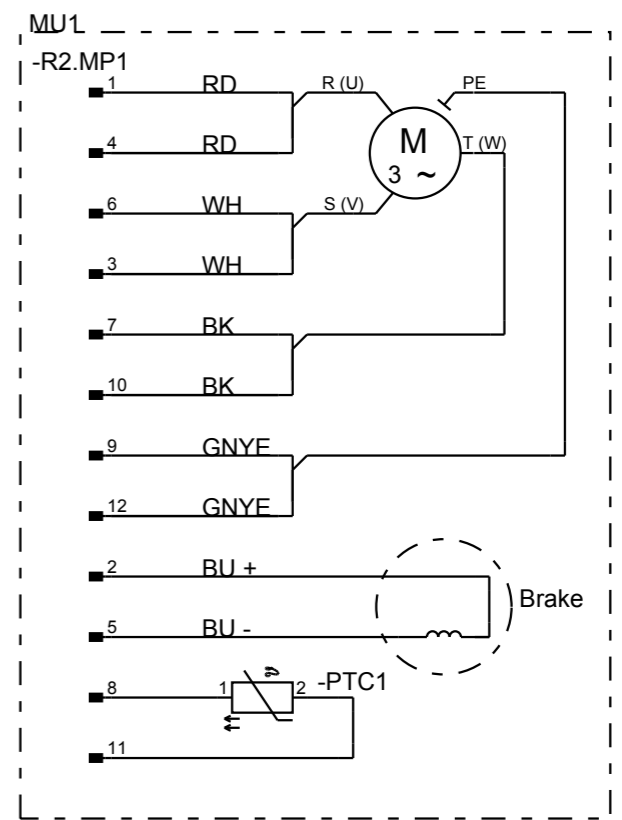
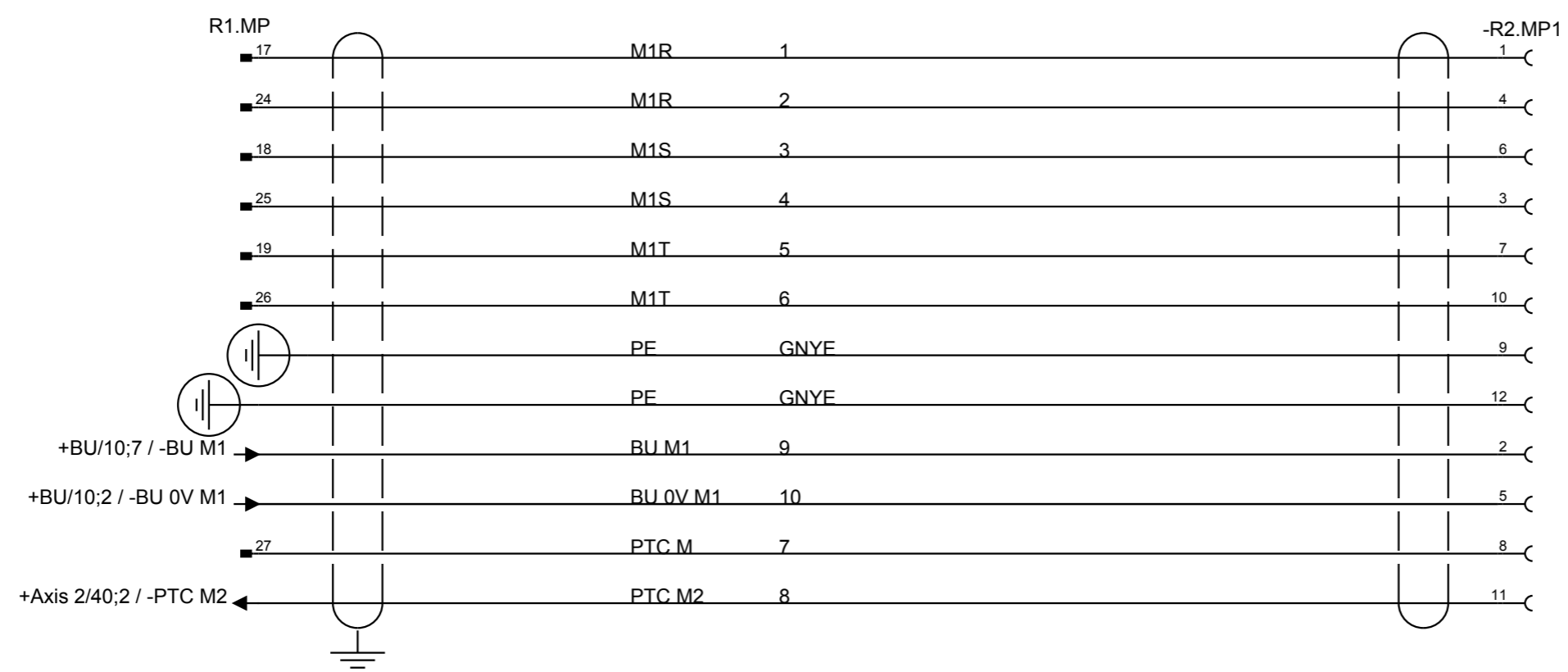
Latest revision:
 Prepared by, date: _____ Approved by, date: _____

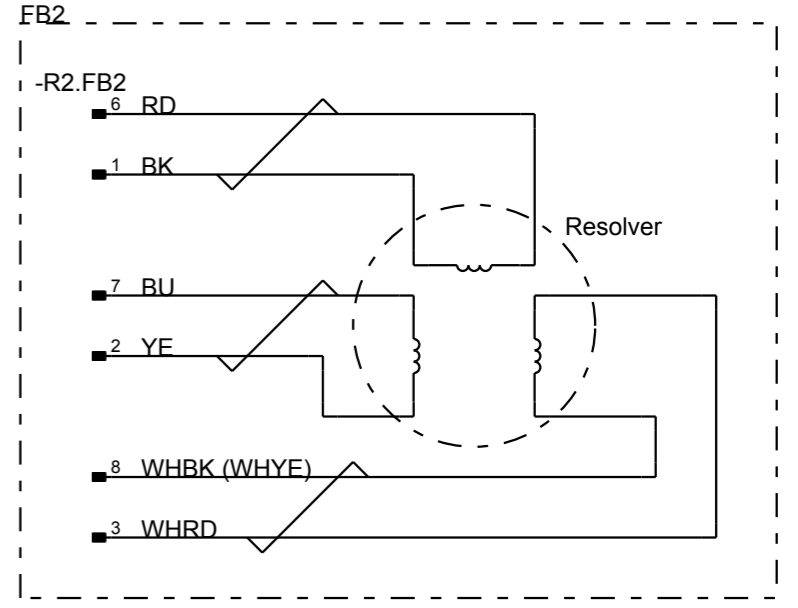
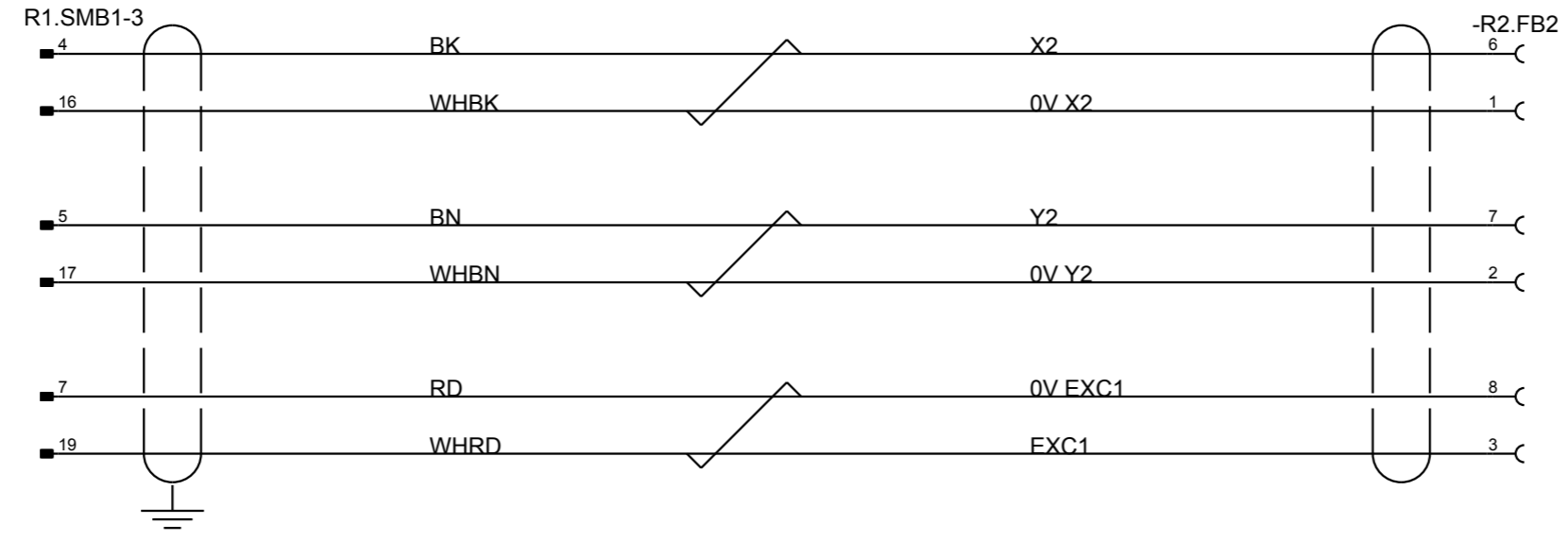
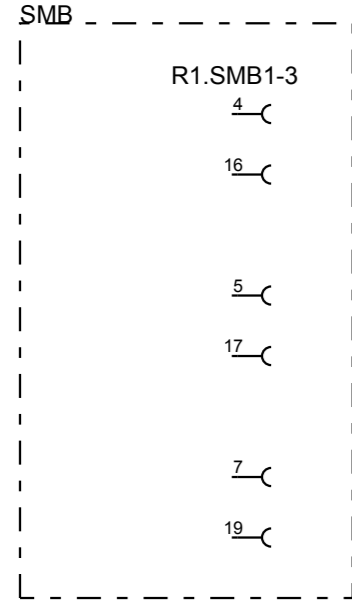
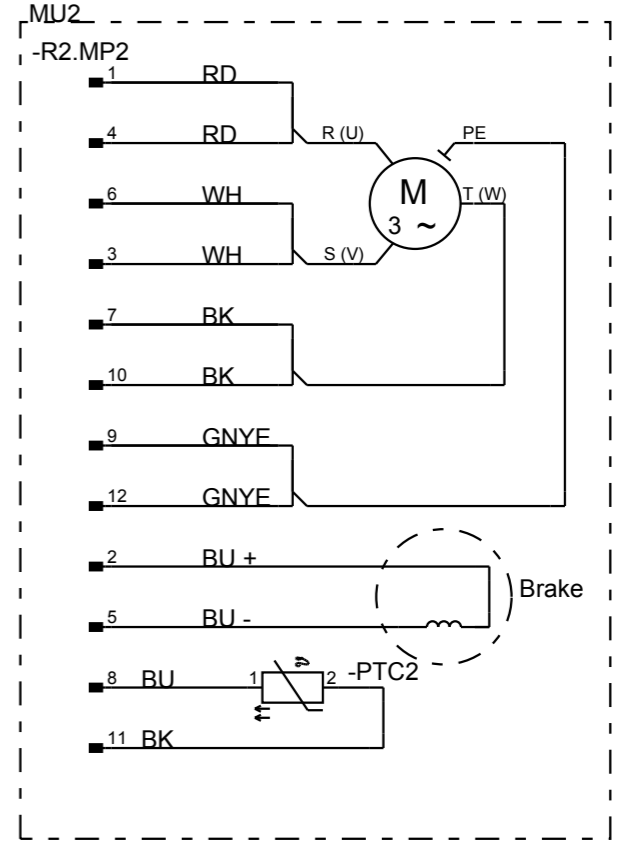
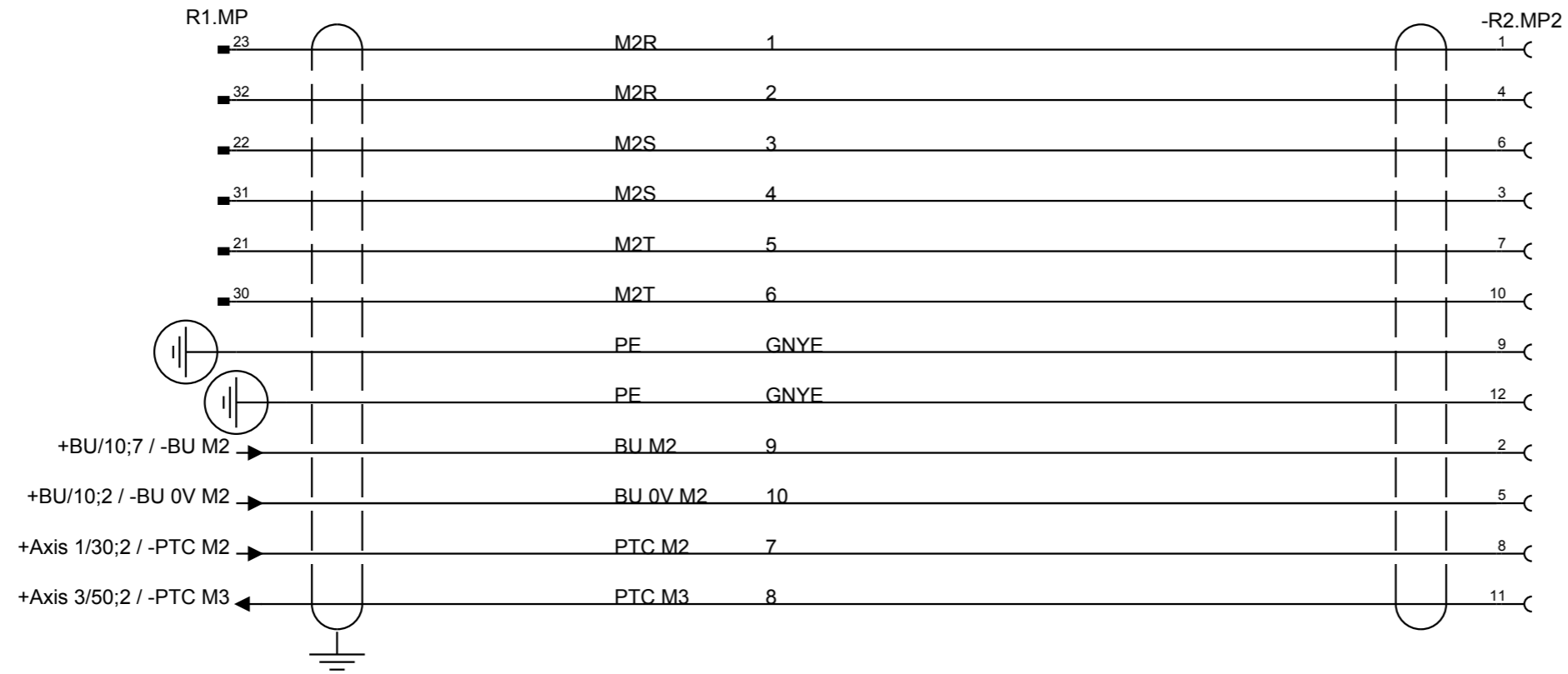


Lab/Office:

Serial Measuring Board
 IRB 66XX / 7600

Status: 2005-10-17 APPROVED	Plant: = 66XX/7600 Location: + SMB Sublocation: +
Document no. 3HAC025744-001	Rev. Ind 02
	Page 20 Next 30 Total 21





Latest revision:

Prepared by, date: _____ Approved by, date: _____



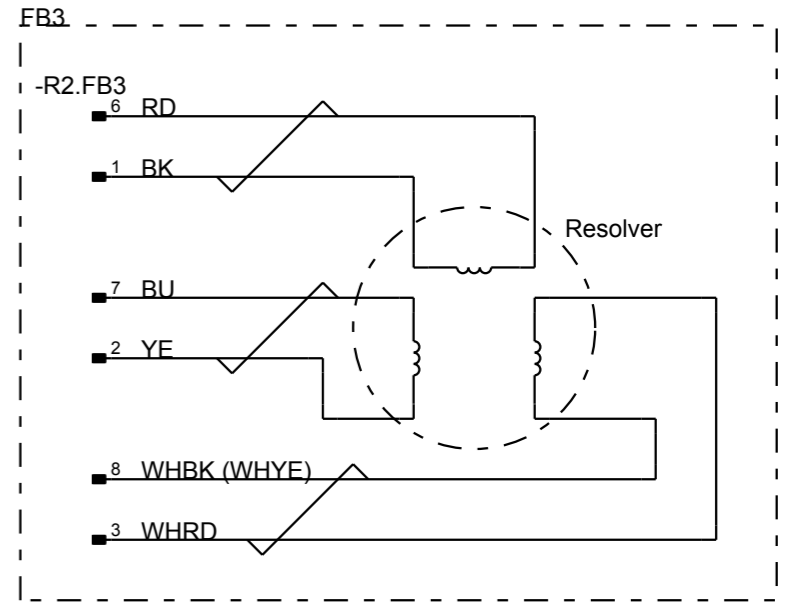
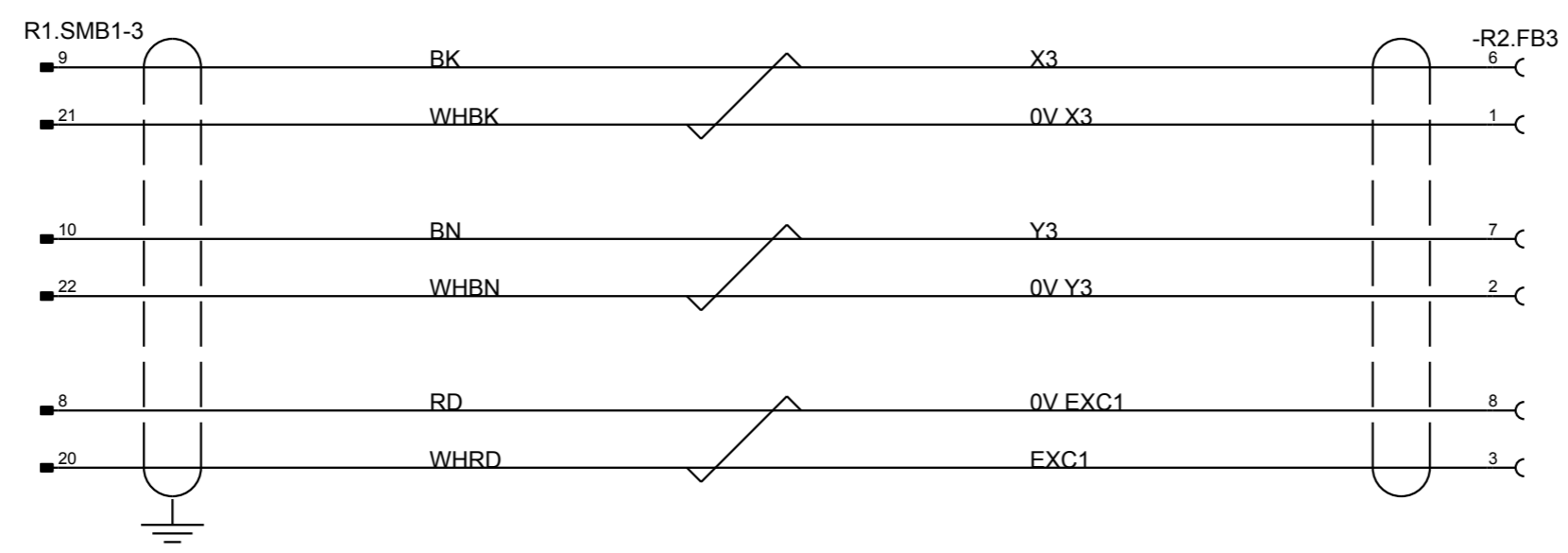
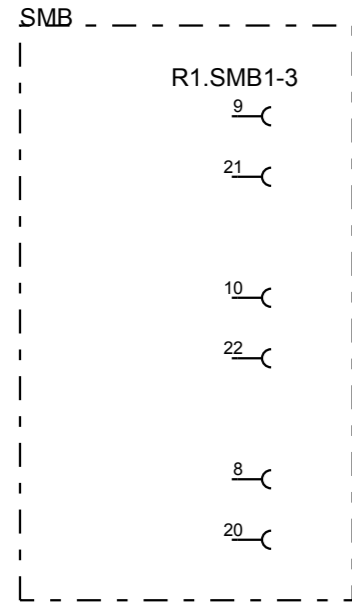
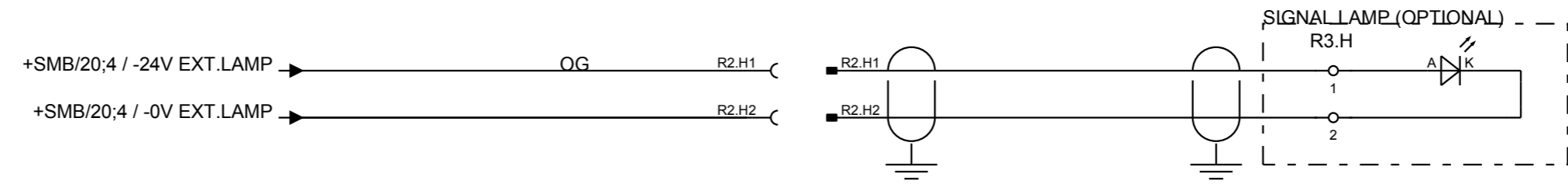
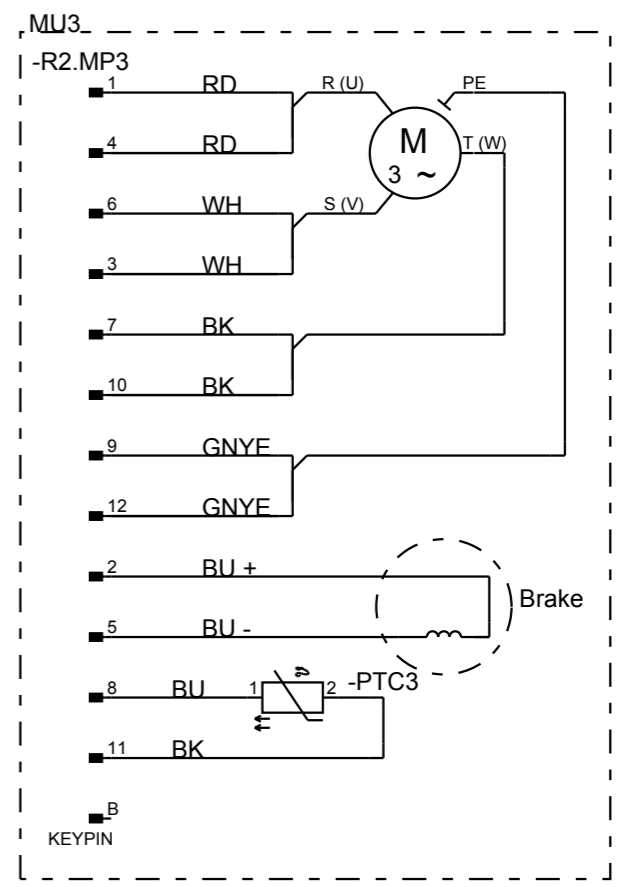
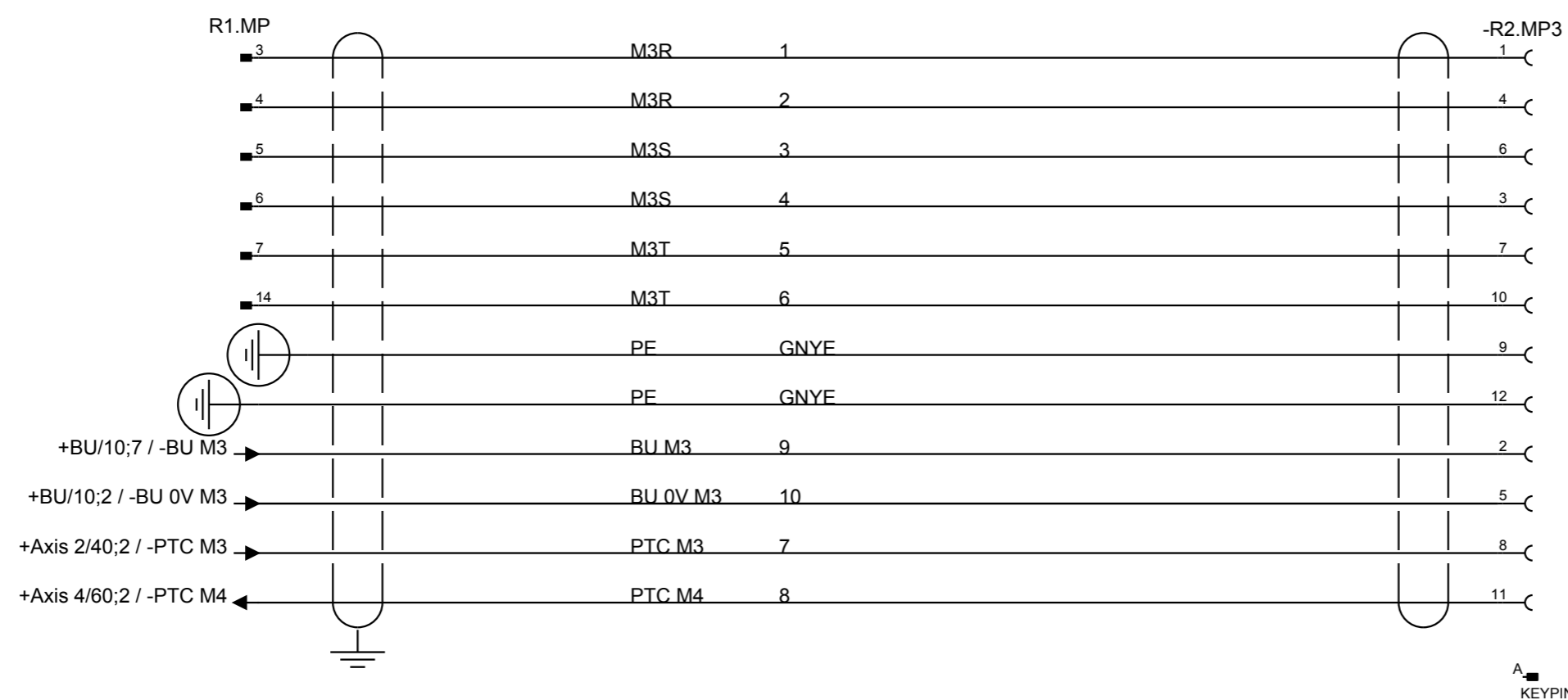
Lab/Office:

Axis 2

IRB 66XX / 7600

Status: 2005-10-17	Plant: = 66XX/7600
APPROVED	Location: + Axis 2
	Sublocation: +
Document no. 3HAC025744-001	Rev. Ind 02
	Page 40
	Next 50
	Total 21

We reserve all rights in this document and in the information contained therein. Reproduction, use or disclosure to third parties without express authority is strictly forbidden. © Copyright 2003 ABB



Latest revision: _____

Prepared by, date: _____

Approved by, date: _____

ABB Lab/Office: _____

Axis 3

Incl. optional signal lamp IRB 66XX / 7600

Status: 2005-10-17
APPROVED

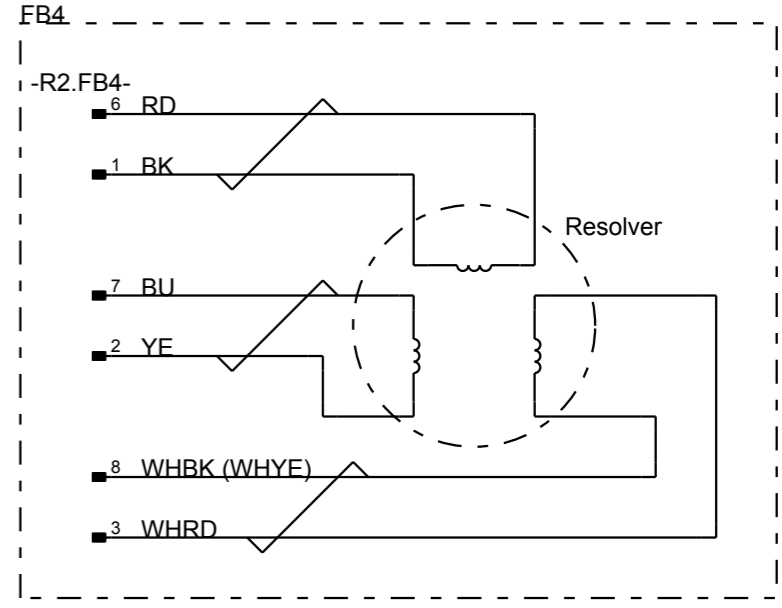
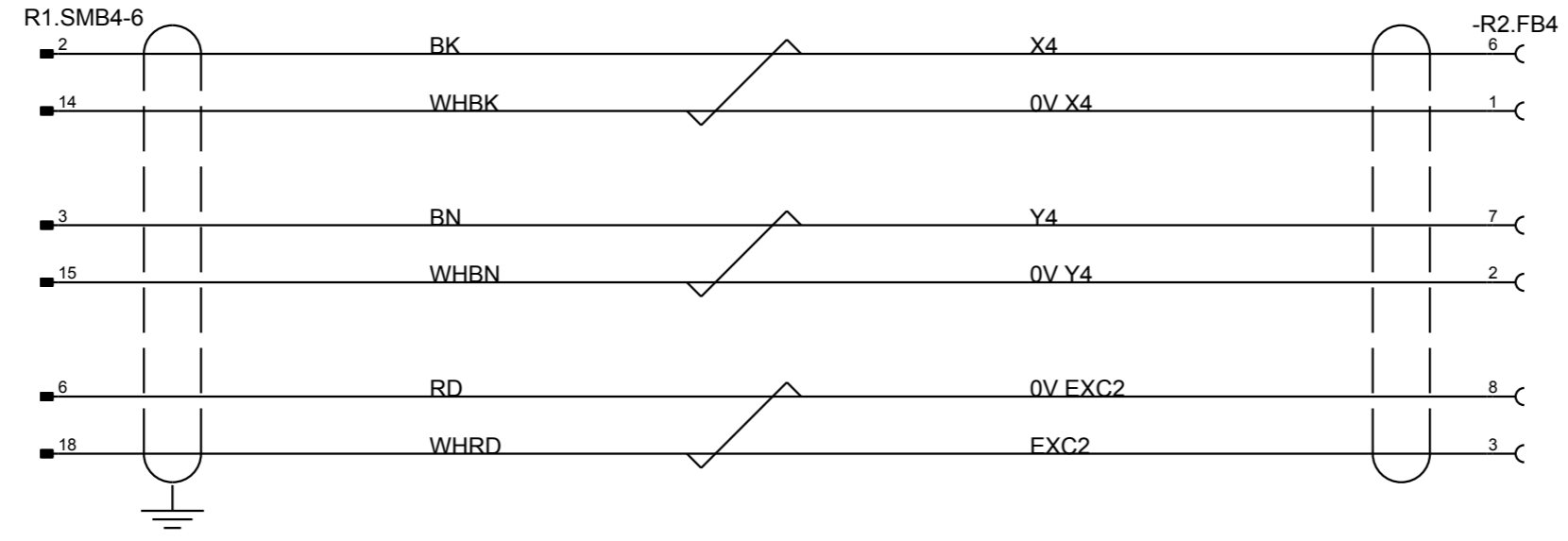
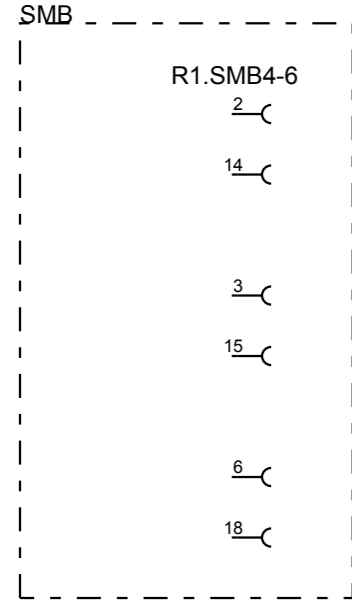
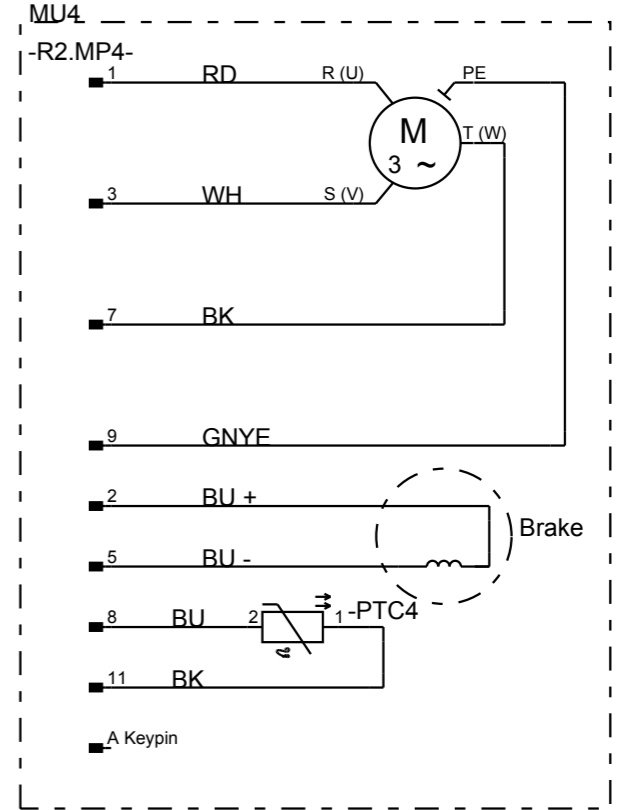
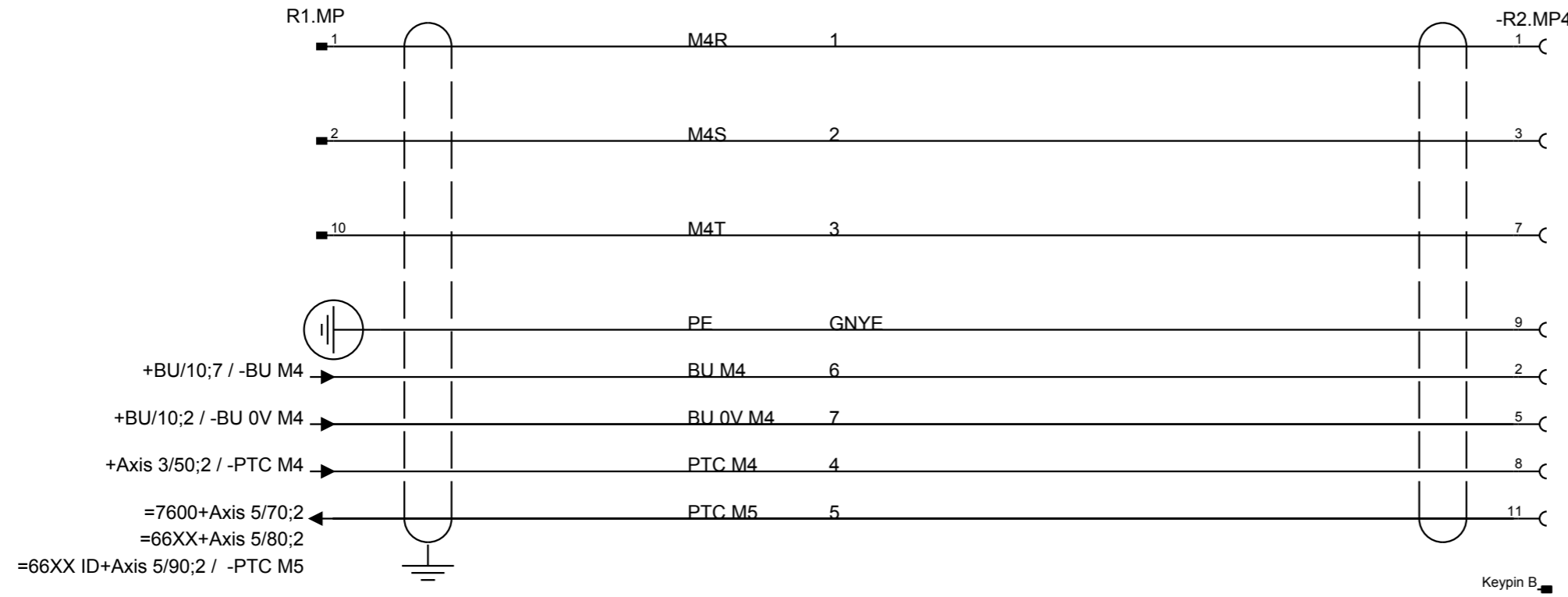
Plant: = 66XX/7600
Location: + Axis 3
Sublocation: +

Document no. **3HAC025744-001**

Rev. Ind **02**

Page 50
Next 60
Total 21

We reserve all rights in this document and in the information contained herein. Reproduction, use or disclosure to third parties without express authority is strictly forbidden. © Copyright 2003 ABB



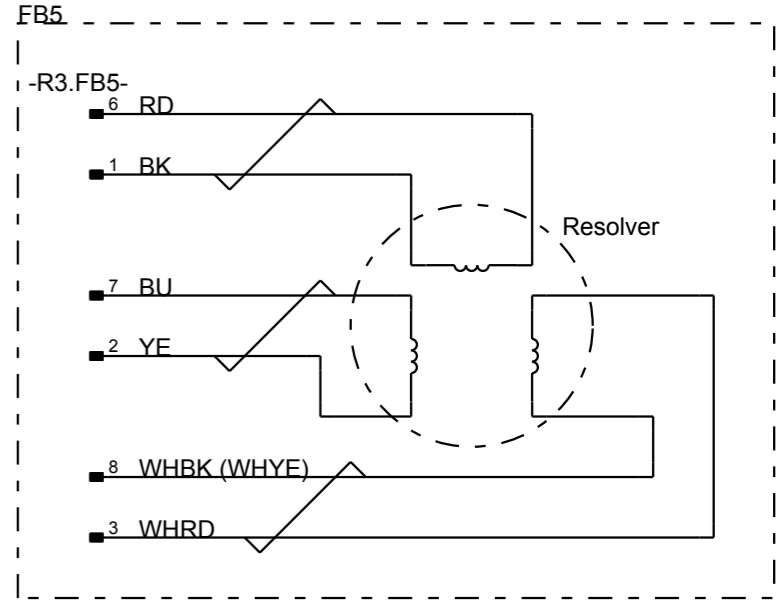
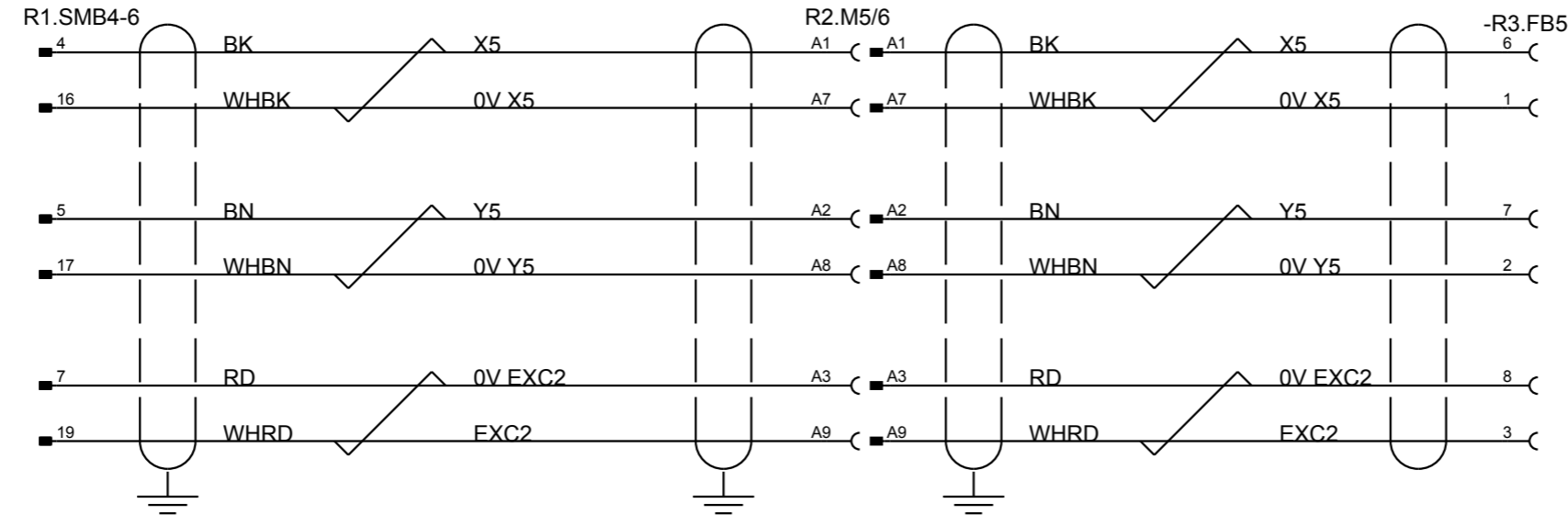
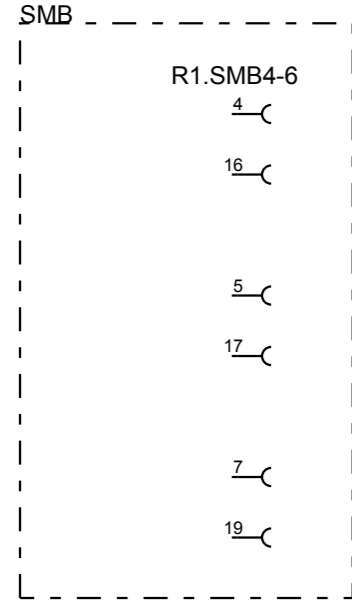
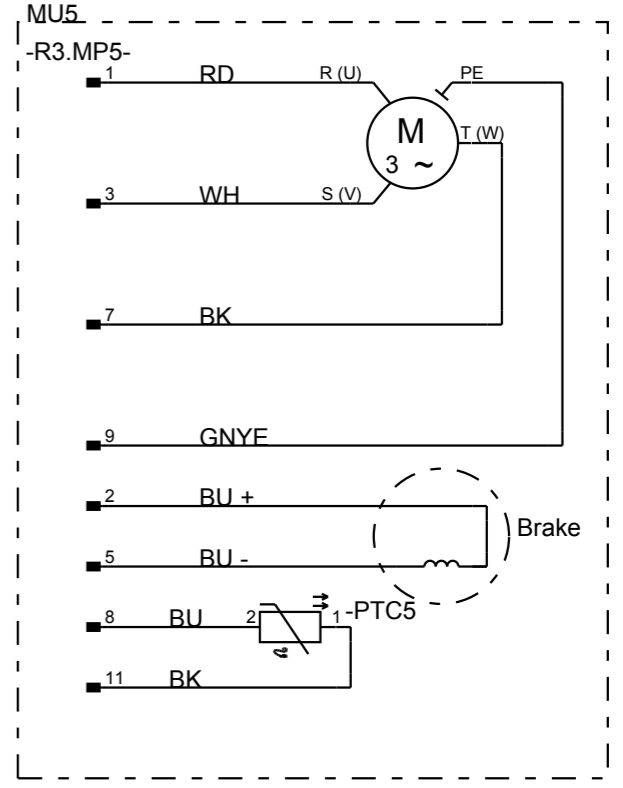
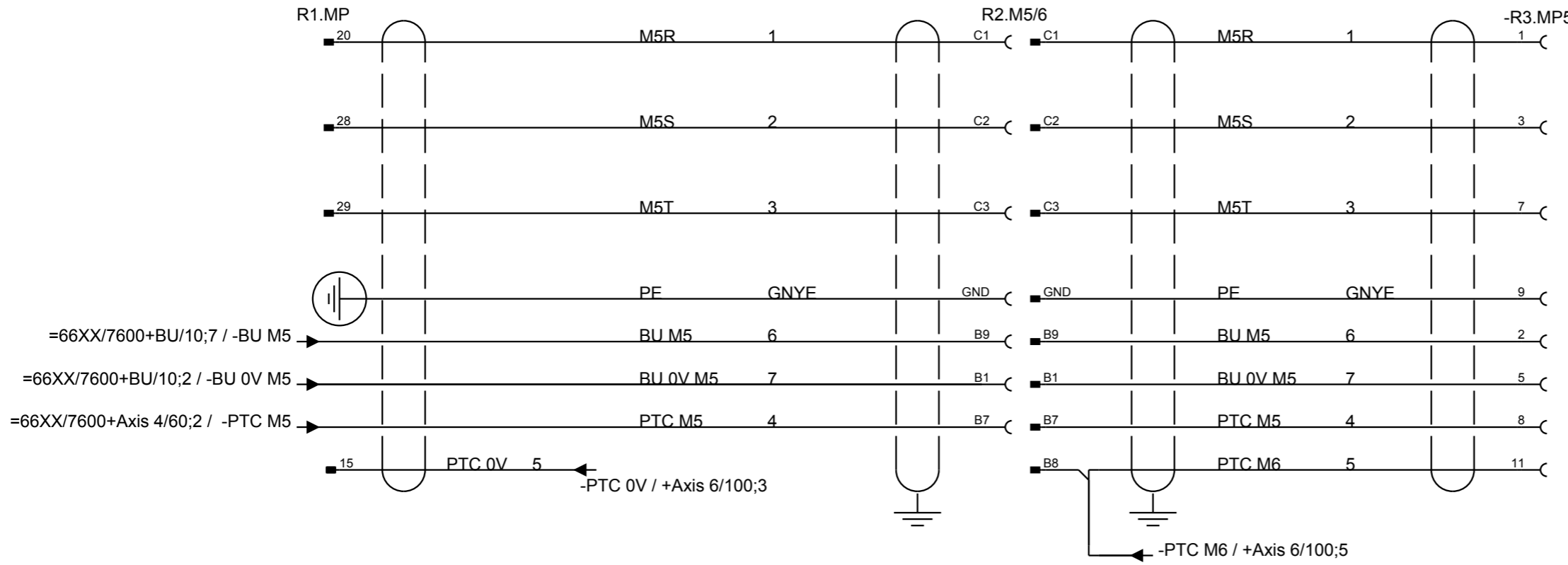
Latest revision:
 Prepared by, date: Approved by, date:



Lab/Office:

Axis 4
 IRB 66XX / 7600

Status: 2005-10-17
APPROVED
 Document no. 3HAC025744-001
 Rev. Ind 02
 Plant: = 66XX/7600
 Location: + Axis 4
 Sublocation: +
 Page 60
 Next 70
 Total 21



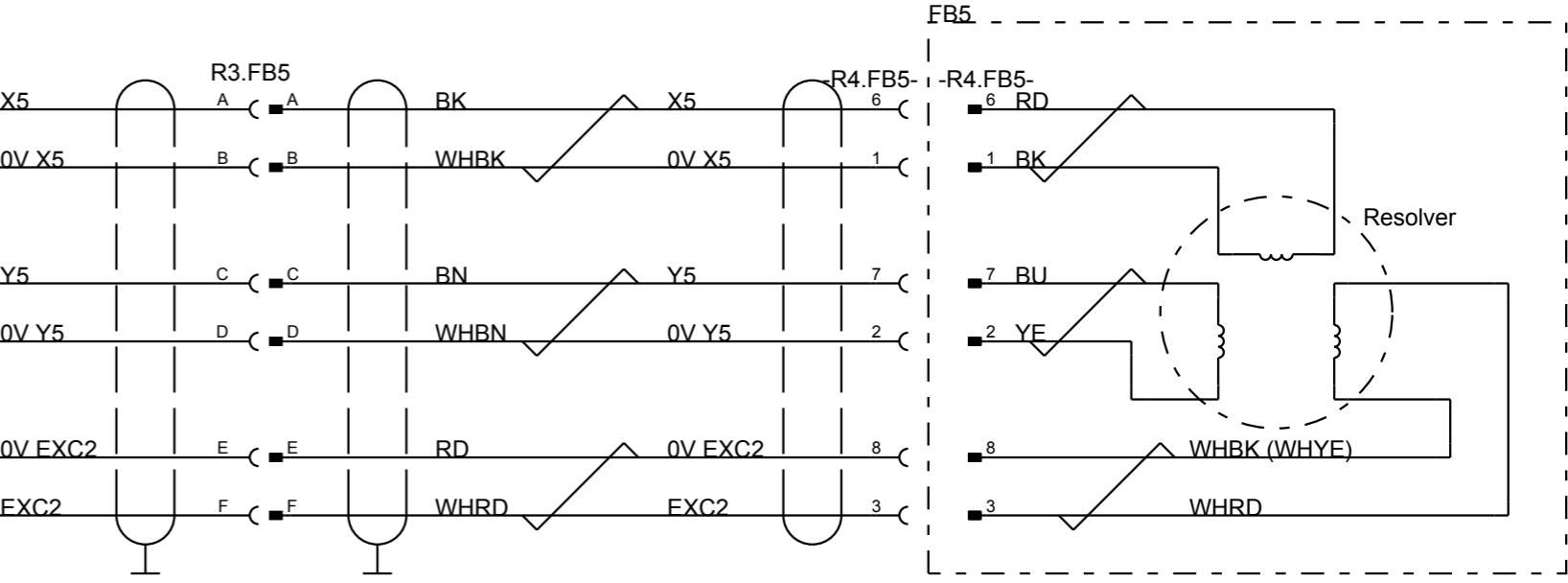
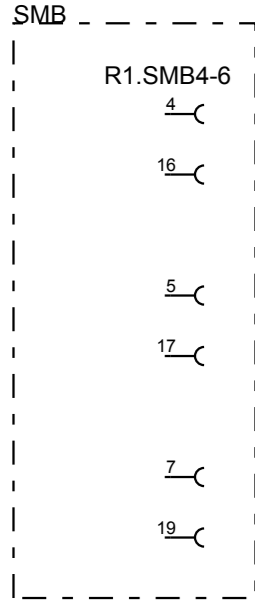
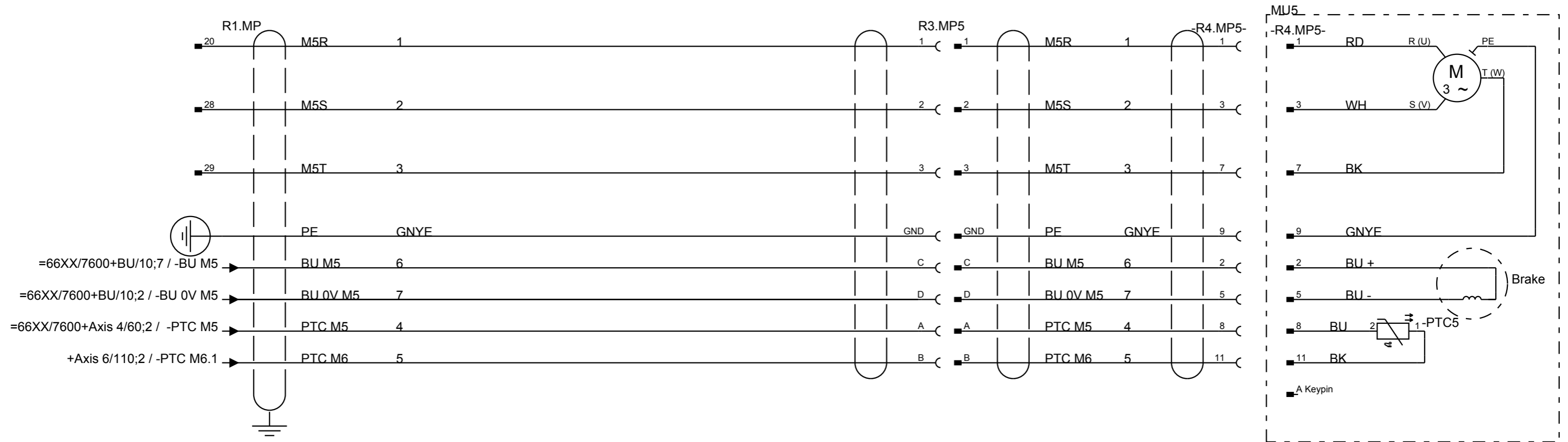
Latest revision:
 Prepared by, date: _____ Approved by, date: _____

ABB Lab/Office:
 Axis 5
 IRB 7600

Status: 2005-10-17
APPROVED
 Document no. 3HAC025744-001
 Rev. Ind 02
 Plant: = 7600
 Location: + Axis 5
 Sublocation: +
 Page 70
 Next 80
 Total 21

We reserve all rights in this document and in the information contained therein. Reproduction, use or disclosure to third parties without express authority is strictly forbidden. © Copyright 2003 ABB

We reserve all rights in this document and in the information contained herein. Reproduction, use or disclosure to third parties without express authority is strictly forbidden. © Copyright 2003 ABB

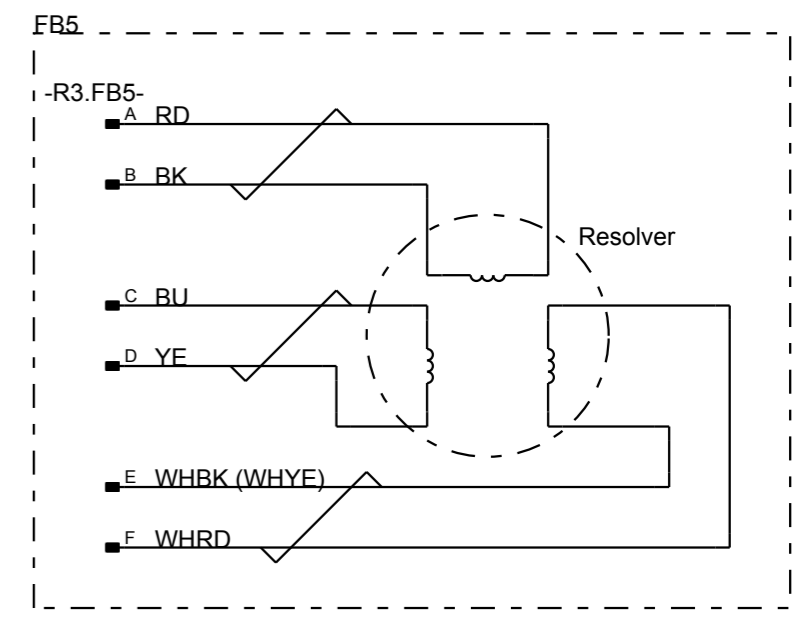
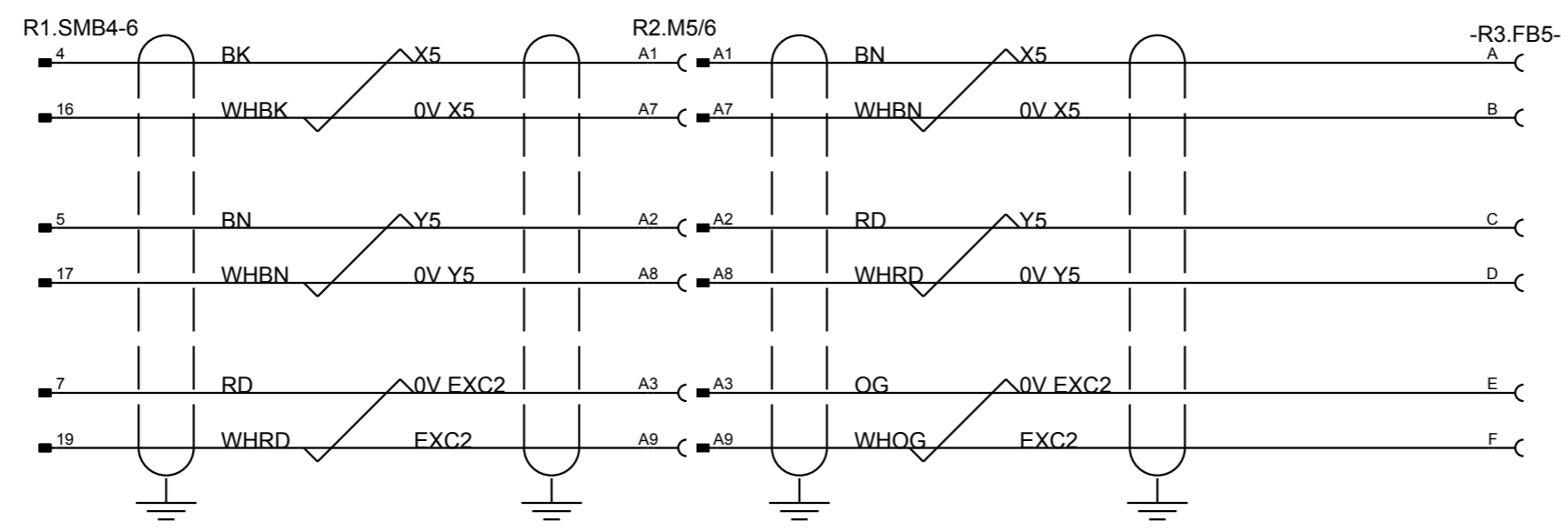
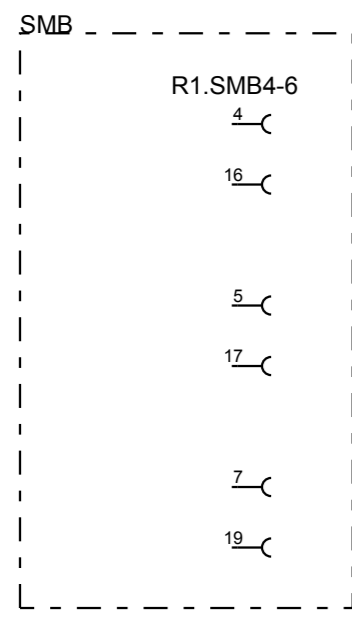
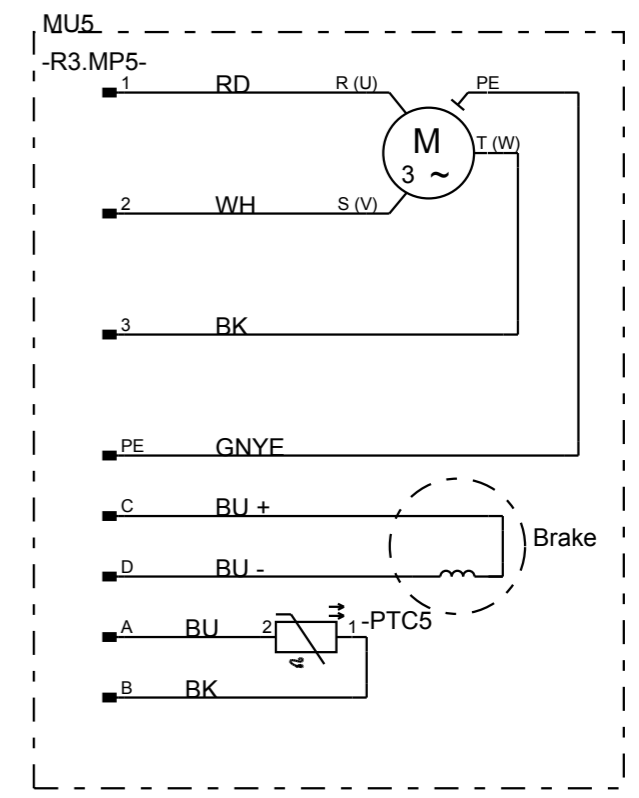
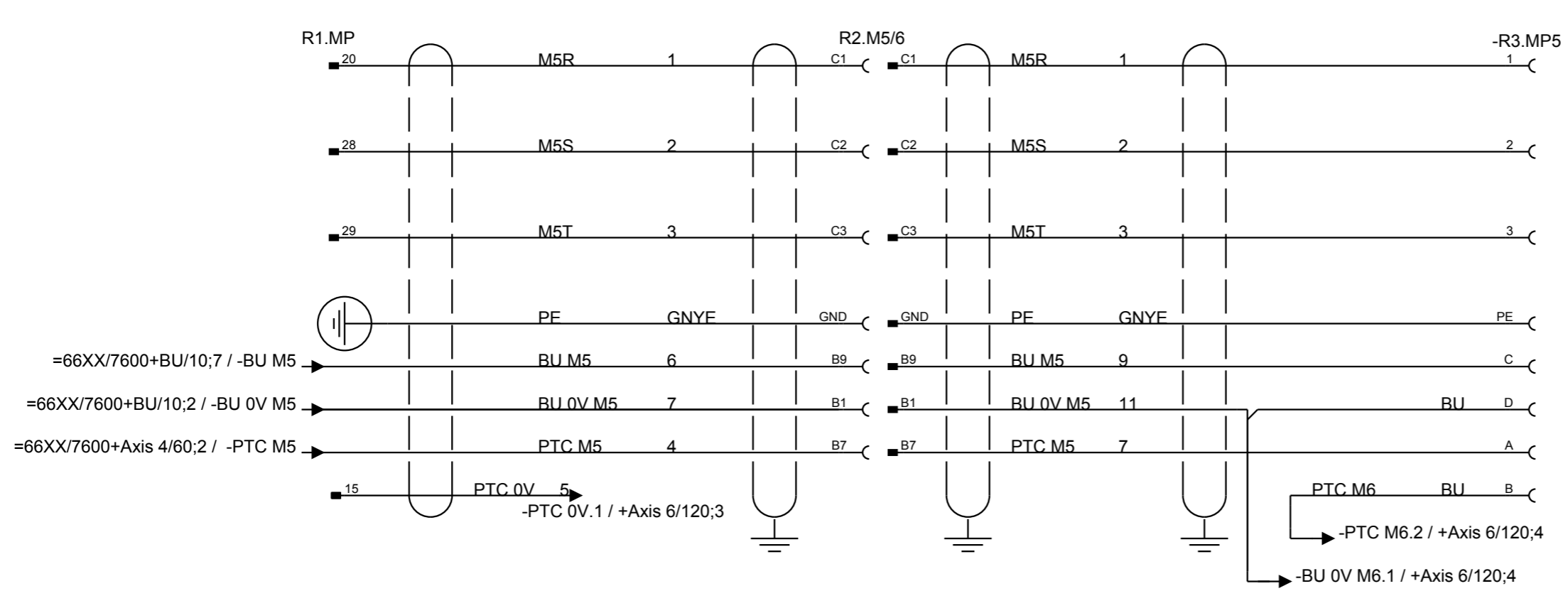


Latest revision:
 Prepared by, date: _____ Approved by, date: _____

ABB Lab/Office:
 Axis 5
 IRB 66XX

Status: 2005-10-17
APPROVED
 Document no. 3HAC025744-001
 Rev. Ind 02
 Plant: = 66XX
 Location: + Axis 5
 Sublocation: +
 Page 80
 Next 90
 Total 21

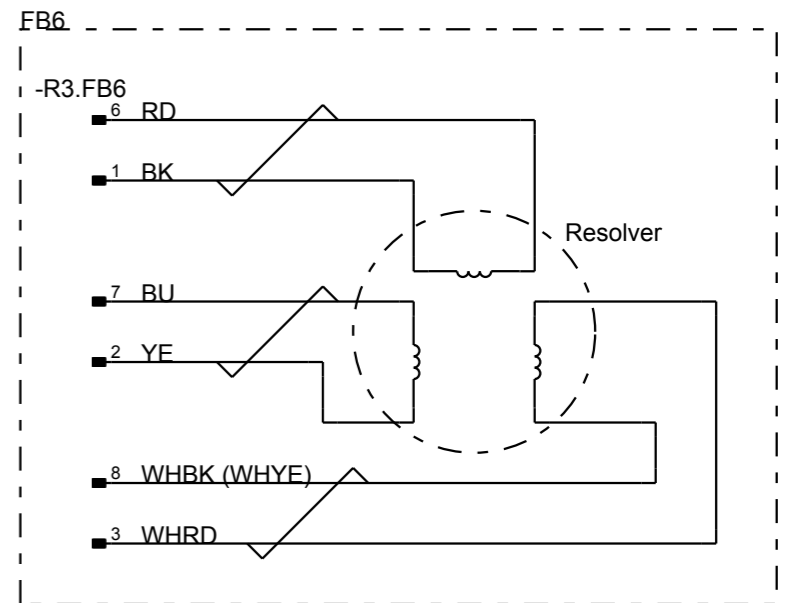
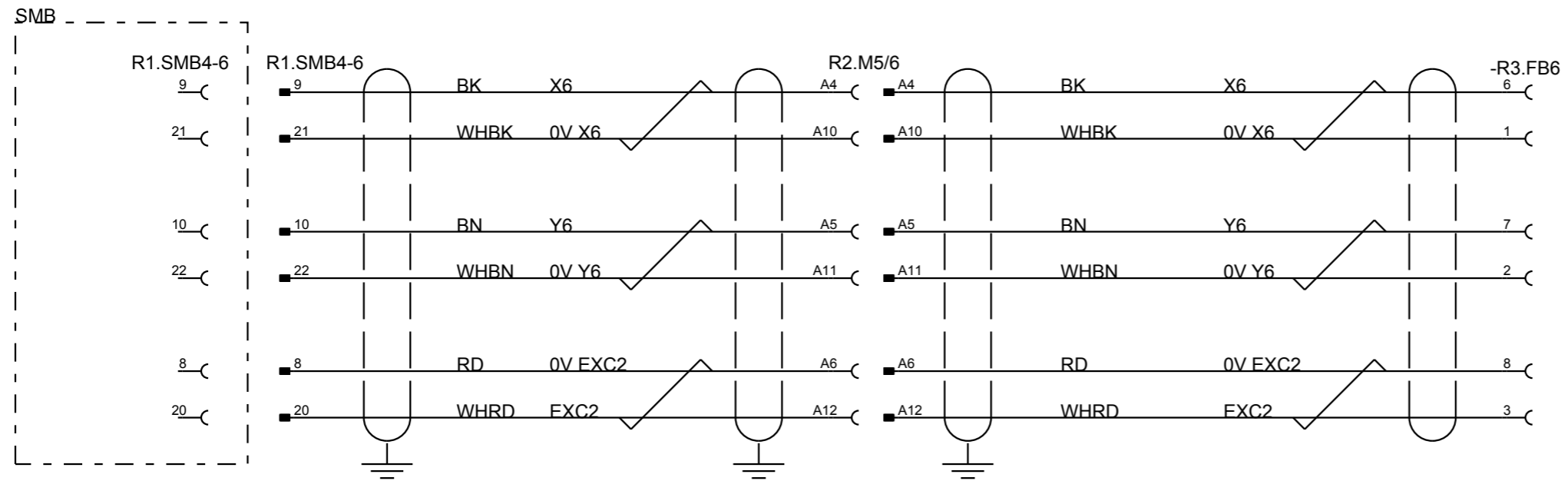
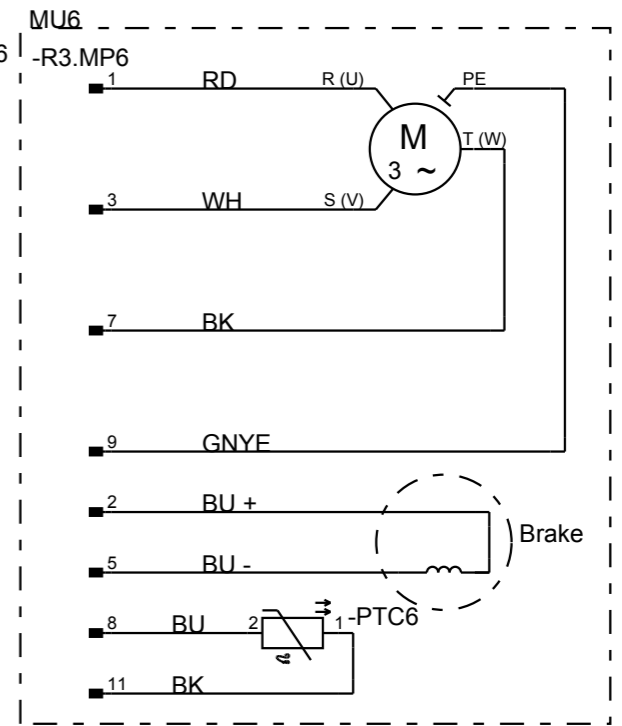
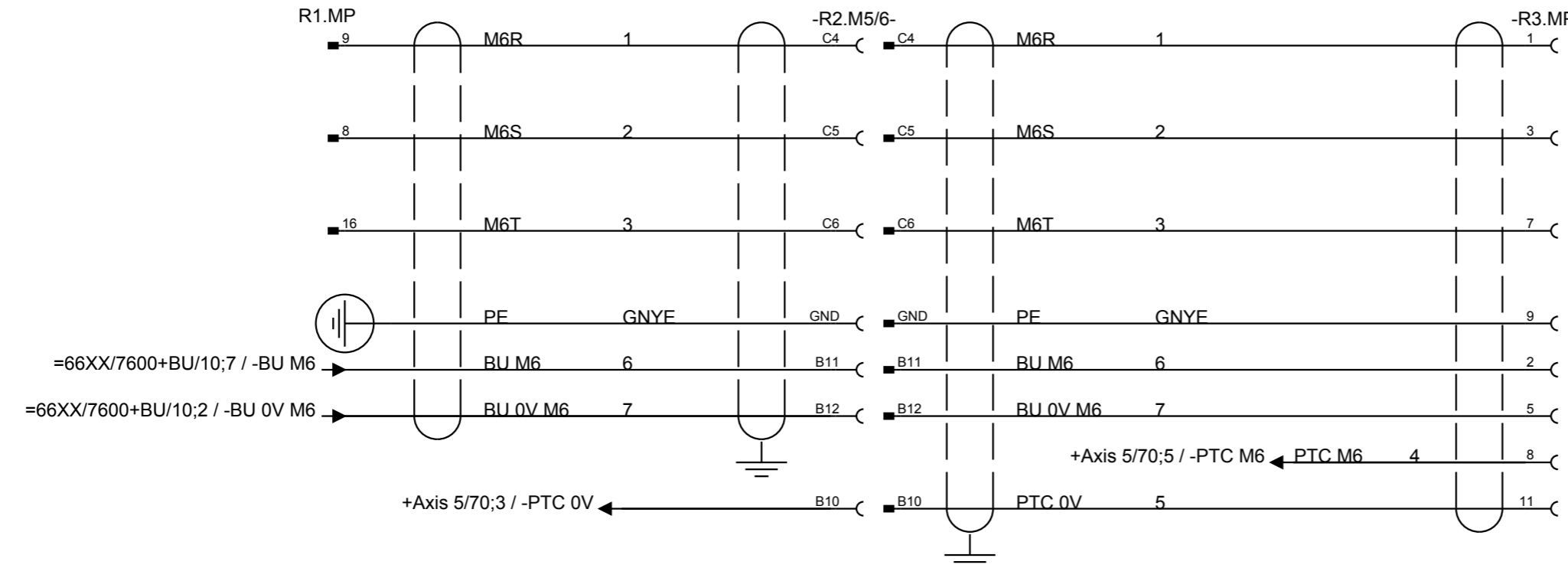
We reserve all rights in this document and in the information contained herein. Reproduction, use or disclosure to third parties without express authority is strictly forbidden. © Copyright 2003 ABB



Latest revision:
 Prepared by, date: _____ Approved by, date: _____

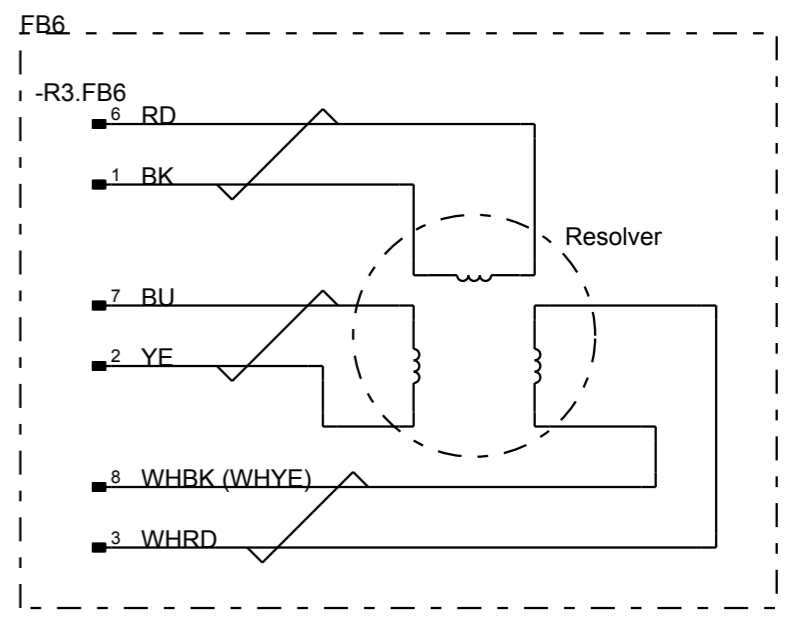
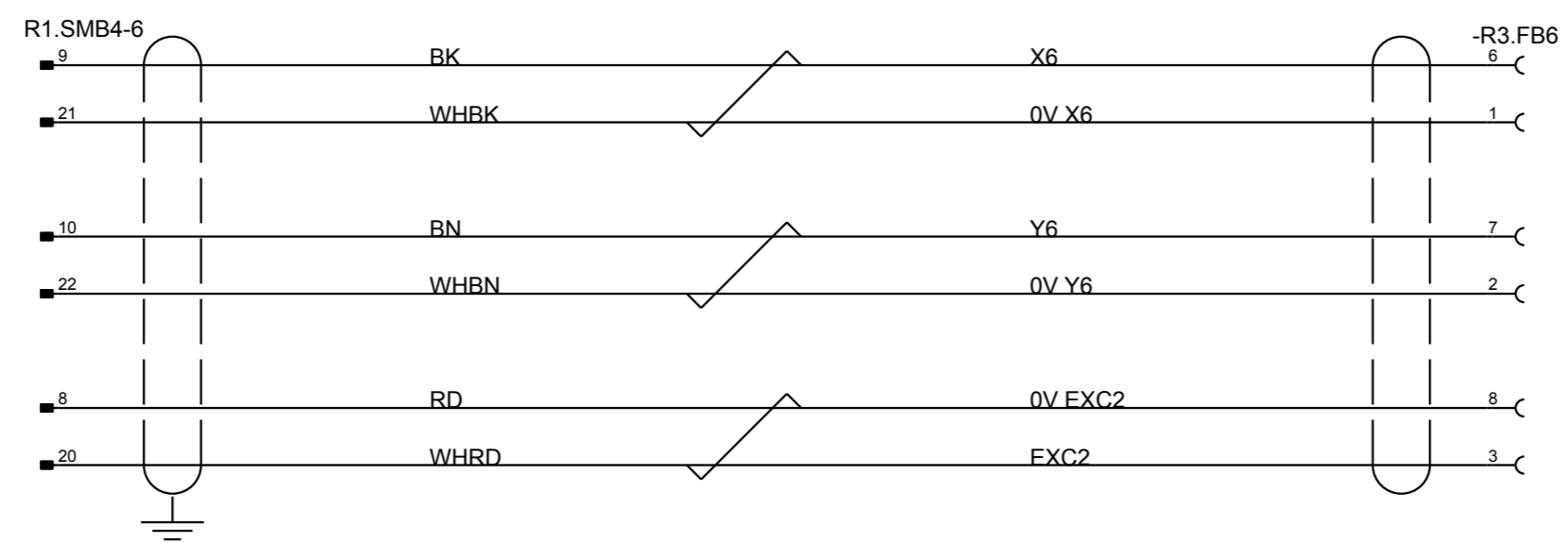
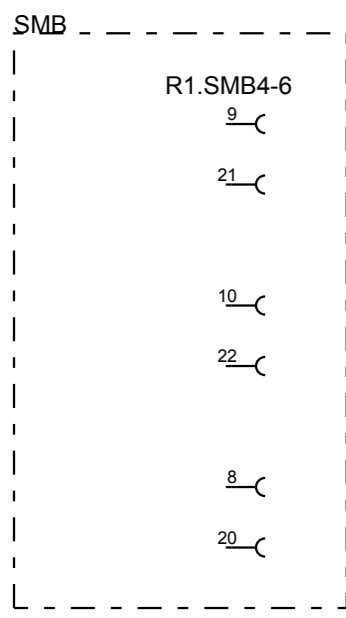
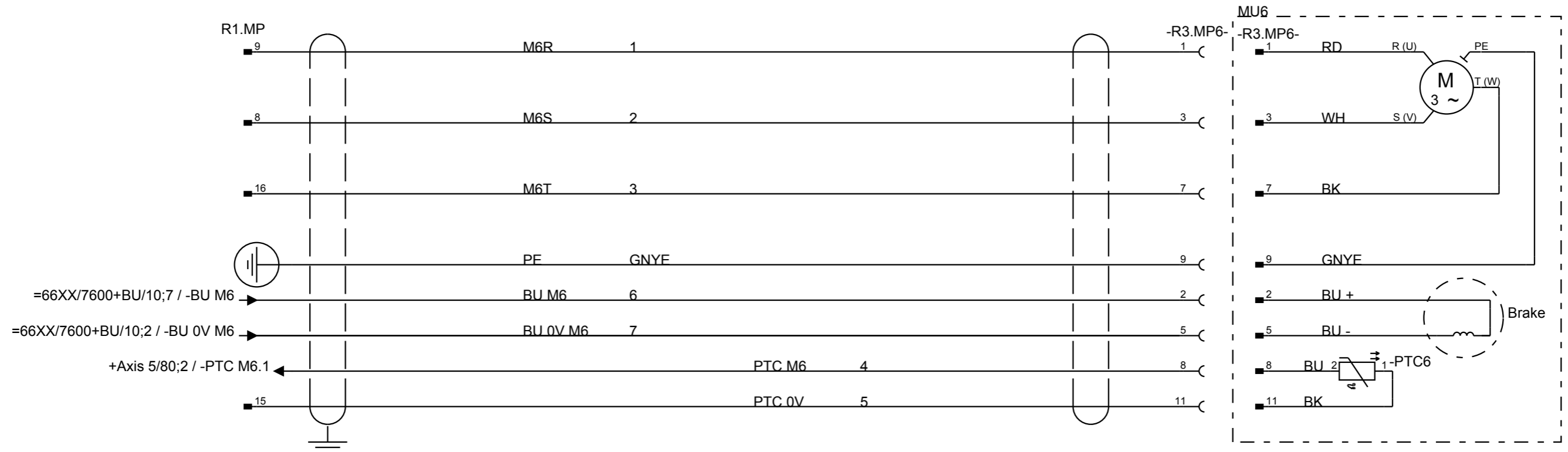
ABB Lab/Office:
 Axis 5
 IRB 66XX ID

Status: 2005-10-17
APPROVED
 Document no. 3HAC025744-001
 Rev. Ind 02
 Plant: = 66XX ID
 Location: + Axis 5
 Sublocation: +
 Page 90
 Next 100
 Total 21



We reserve all rights in this document and in the information contained therein. Reproduction, use or disclosure to third parties without express authority is strictly forbidden. © Copyright 2003 ABB

Latest revision:			Lab/Office:	Axis 6	Status: 2005-10-17	Plant: = 7600	
Prepared by, date:	Approved by, date:				IRB 7600	APPROVED	Location: + Axis 6
					Document no. 3HAC025744-001	Rev. Ind 02	Page 100
							Next 110
							Total 21



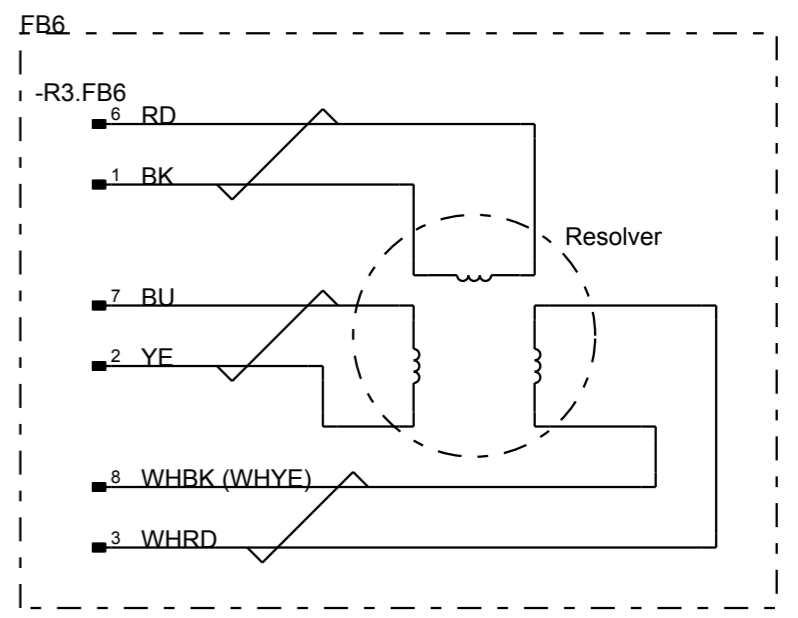
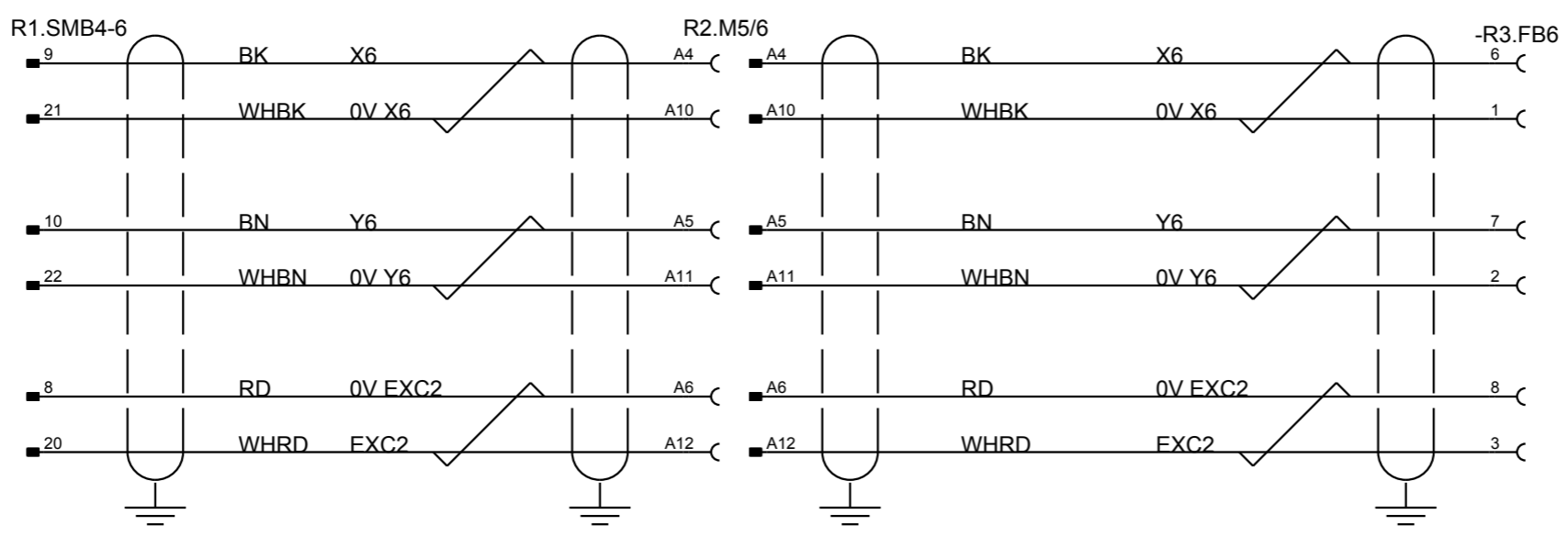
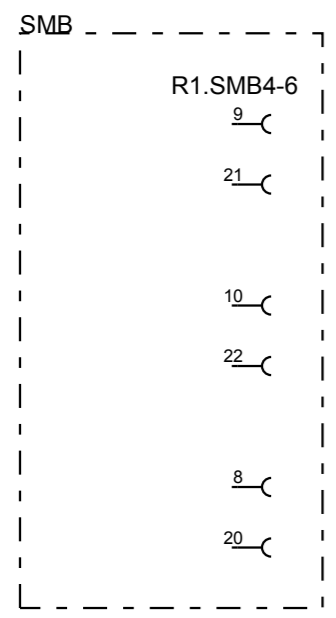
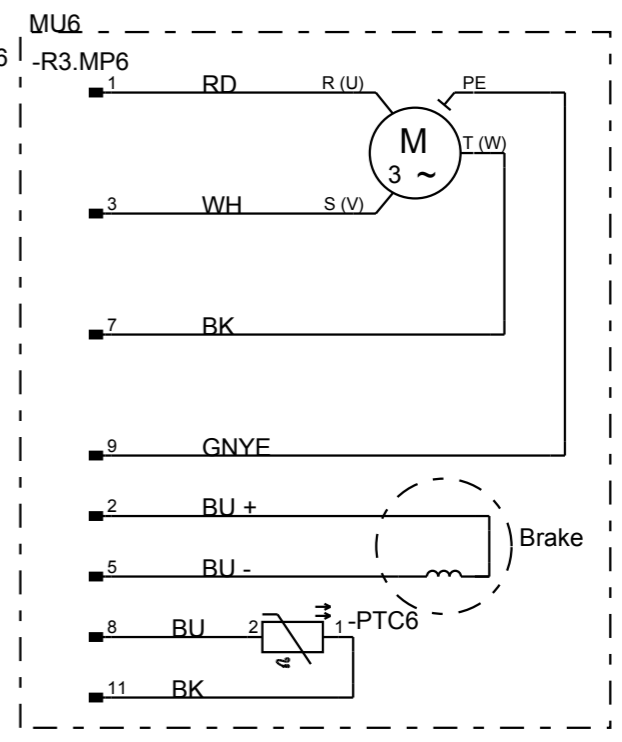
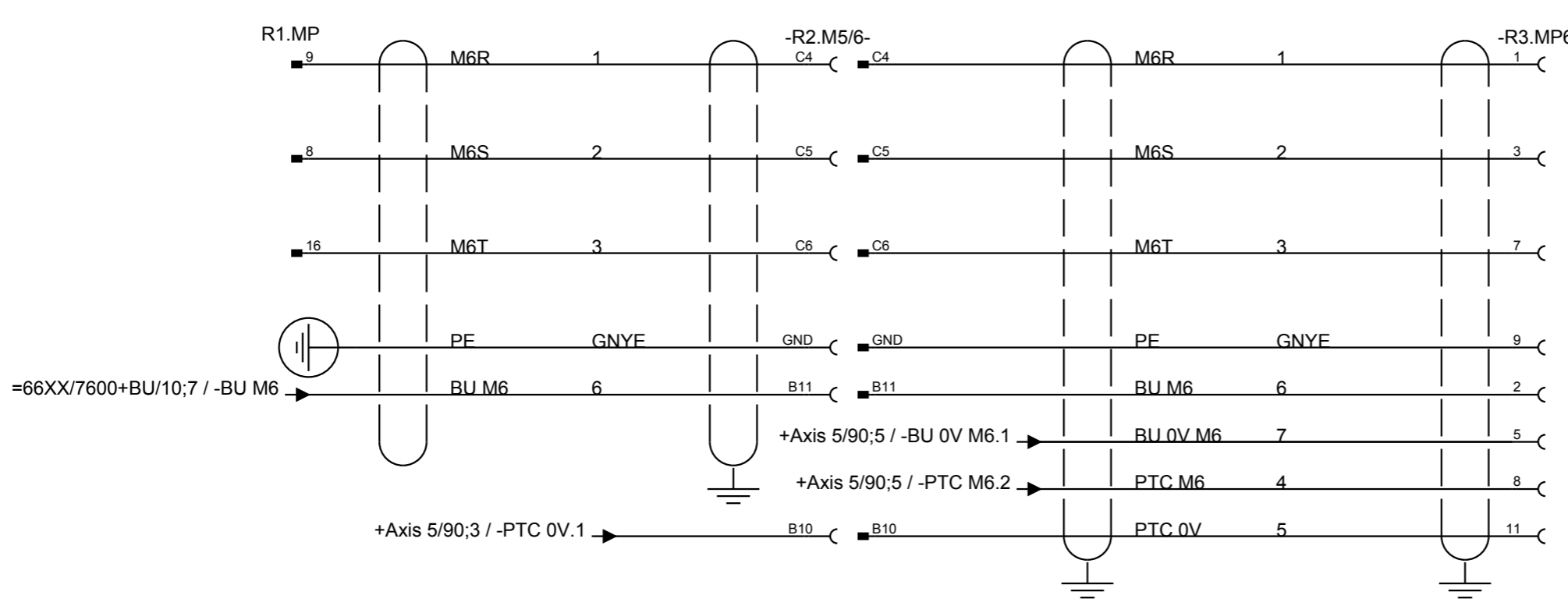
Latest revision:
 Prepared by, date: _____ Approved by, date: _____



Axis 6
 IRB 66XX

Status: 2005-10-17 APPROVED	Plant: = 66XX Location: + Axis 6 Sublocation: +
Document no. 3HAC025744-001	Rev. Ind 02
	Page 110 Next 120 Total 21

We reserve all rights in this document and in the information contained therein. Reproduction, use or disclosure to third parties without express authority is strictly forbidden. © Copyright 2003 ABB

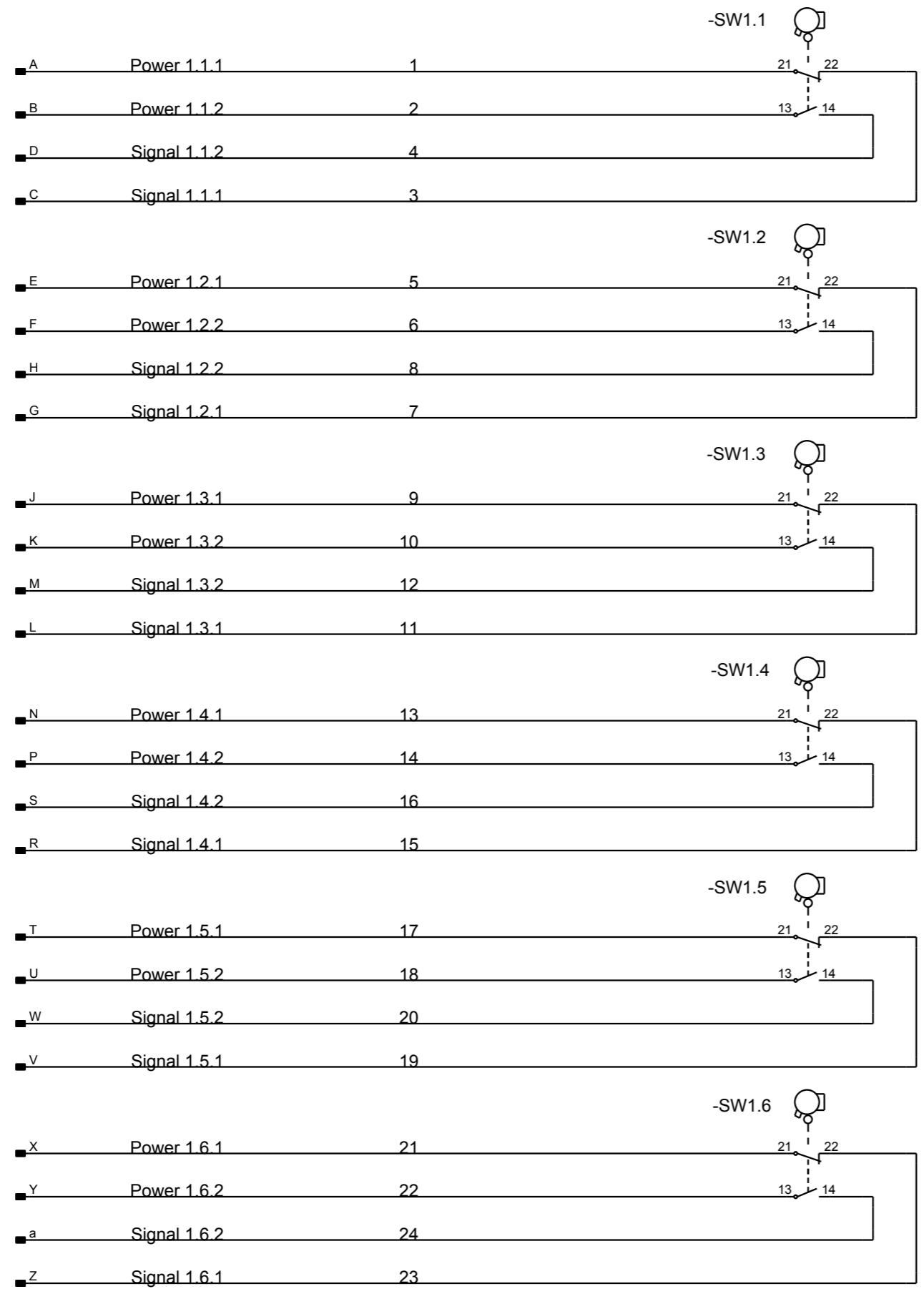


Latest revision:
Prepared by, date: _____ Approved by, date: _____

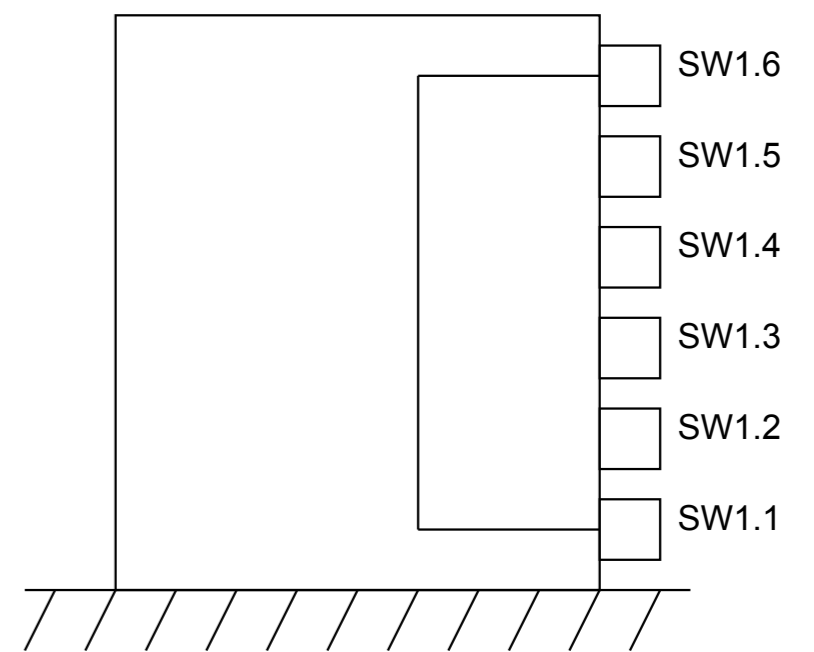
ABB Lab/Office:
Axis 6
IRB 66XX ID

Status: 2005-10-17
APPROVED
Document no. 3HAC025744-001
Rev. Ind 02
Plant: = 66XX ID
Location: + Axis 6
Sublocation: +
Page 120
Next 130
Total 21

We reserve all rights in this document and in the information contained therein. Reproduction, use or disclosure to third parties without express authority is strictly forbidden. © Copyright 2003 ABB



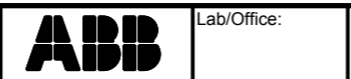
Location of position switches



Position switches
Axis 1

we reserve all rights in this document and in the information contained therein. Reproduction, use or disclosure to third parties without express authority is strictly forbidden. © Copyright 2003 ABB

Latest revision: _____
Prepared by, date: _____ Approved by, date: _____

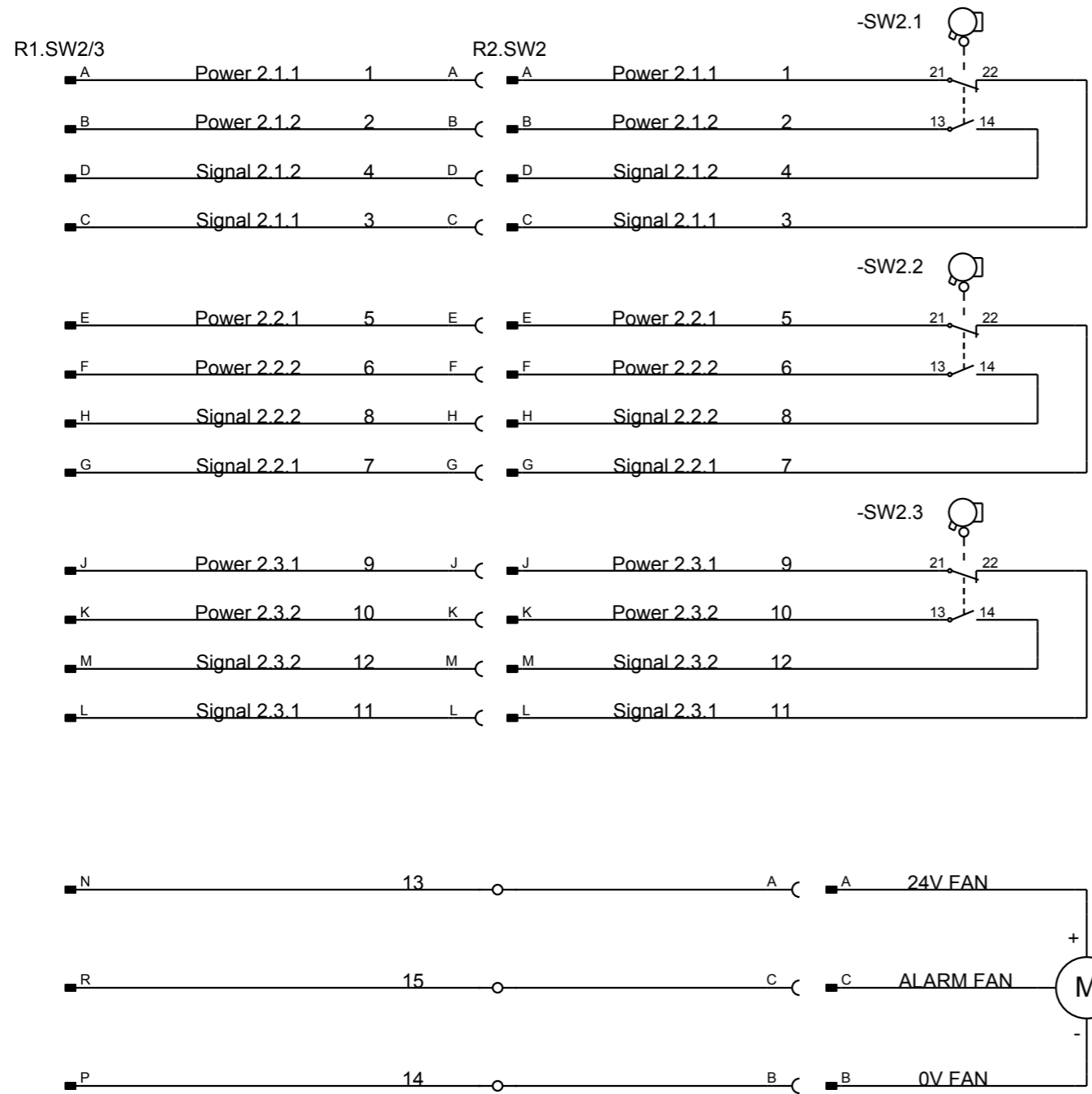


Lab/Office: _____

Pos. switch Axis 1
Optional IRB 66XX / 7600

Status: 2005-10-17 APPROVED	Plant: = 66XX/7600 Location: + Option Sublocation: +
Document no. 3HAC025744-001	Rev. Ind 02
	Page 130 Next 140 Total 21

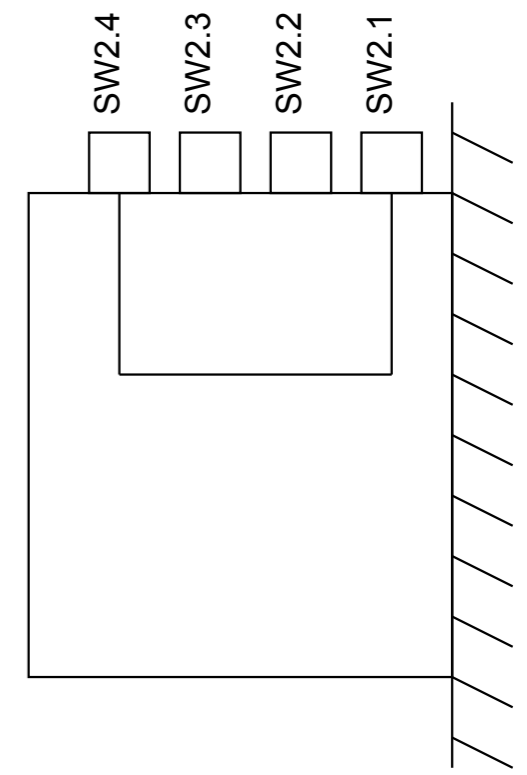
We reserve all rights in this document and in the information contained therein. Reproduction, use or disclosure to third parties without express authority is strictly forbidden. © Copyright 2003 ABB



Position switches
Axis 2

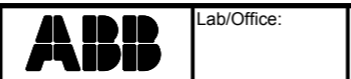
Fan axis 1 or 2

Location of position switches



Latest revision:

Prepared by, date: _____ Approved by, date: _____



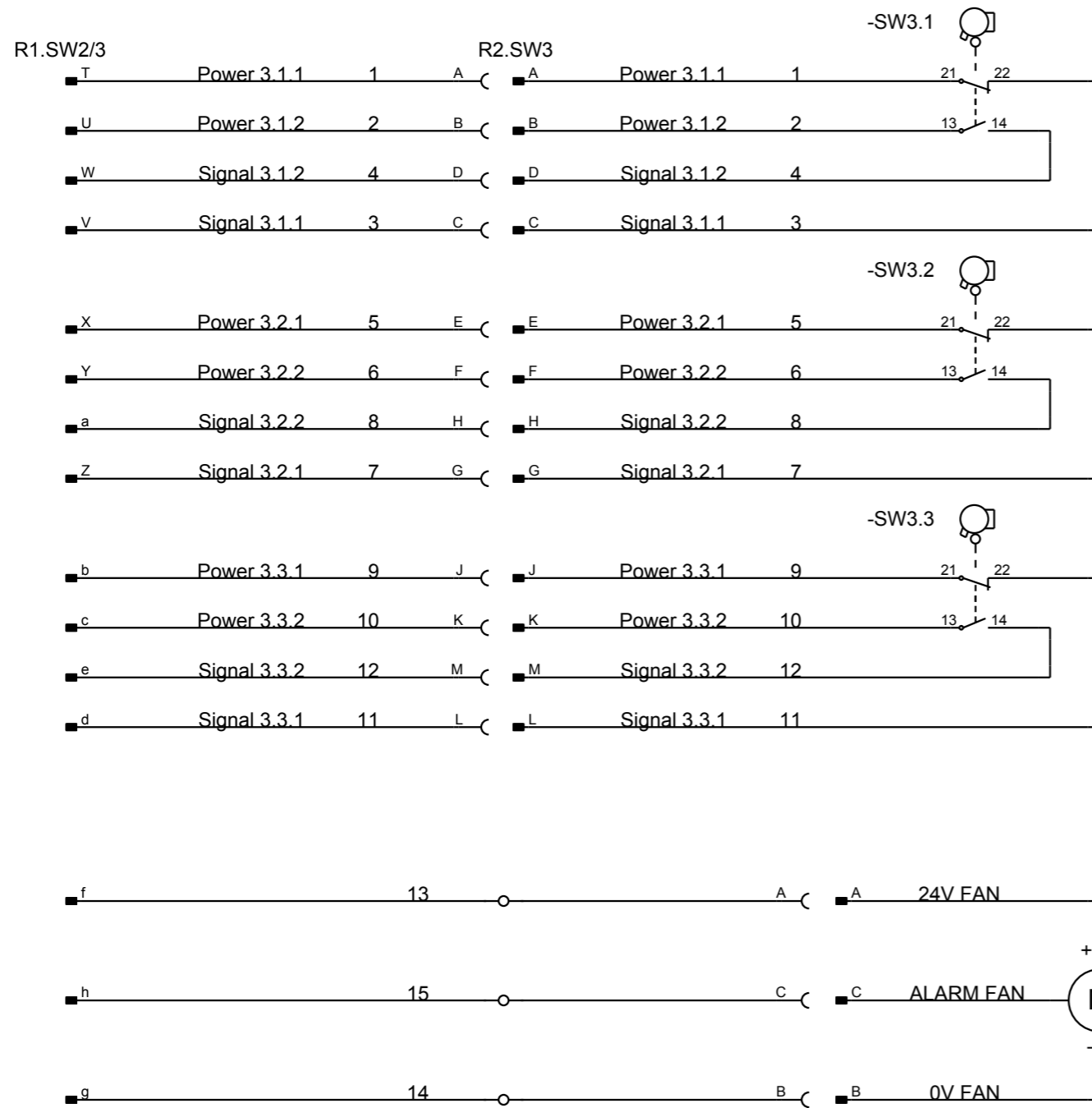
Lab/Office:

Pos. switch Axis 2

Optional IRB 66XX / 7600

Status: 2005-10-17	Plant: = 66XX/7600
APPROVED	Location: + Option
Document no. 3HAC025744-001	Sublocation: +
Rev. Ind 02	Page 140
	Next 150
	Total 21

We reserve all rights in this document and in the information contained therein. Reproduction, use or disclosure to third parties without express authority is strictly forbidden. © Copyright 2003 ABB



Position switches
Axis 3

Fan axis 3

Location of Position switches

