

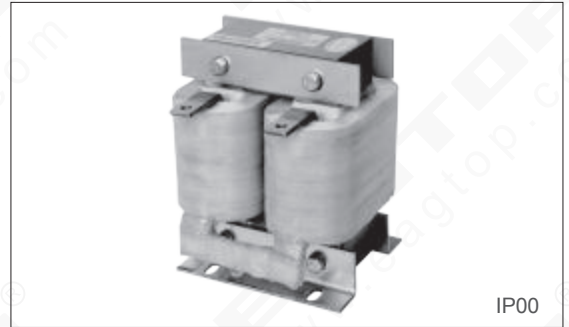
# 直流电抗器

## DC Reactor

### 产品简述(Product Profile)

直流电路中能减少电流脉动，当电感量达到一定量时能保证电流连续不断流。改善电容滤波造成的输入电流波形畸变，减少和防止因冲击电流造成整流桥损坏和电容过热，提高功率因素，降低直流母线交流脉冲，限制电网电压的瞬变。

Reduce the current ripple in DC circuit, ensuring continuous current when inductance value reach to a certain degree. Reduce and prevent the rectifier bridge damage and capacitance overheating caused by pulse current. Improve power factor, reduce the AC pulse to the DC busbar. Limit grid voltage transient .



### 产品特点(Product Features)

电抗器高性能，高耐温的符合绝缘材料配合无骨架工艺，电抗器耐热等级高，F级和H级可选。电抗器采用氩弧焊接工艺，噪音低，漏磁小，电感稳定。线圈采用箔绕工艺，耐电磁力强，工艺整洁，外观漂亮。铁心采用优质低损耗冷轧硅钢片，使电抗器可靠性高，体积小，重量轻，价格便宜。

The inside insulation material is of high performance & high temperature resistant , combined with frameless process, the reactor's temperature heat-resisting ability is strong, and the class For class His optional. Reactor air gap adopts argon arc welding process, which has low noise, small magnetic flux leakage and stable inductance. Coiled with foil winding process, reactor has strong resistance of electric magnetic force, good presentation quality. Core with grain-oriented cold-rolled silicon steel sheets, making reactors have high reliability, small size, light weight and low cost .

### 产品参数(Product Parameters)

- |  |  |
|--|--|
| 1. 额定工作电压：DC500V-DC1000V                                     | 1. Voltage Range: DC500V-DC1000V   |
| 2. 抗电强度：铁芯-绕组3000VAC/50Hz/5mA，10S无飞弧击穿                       | 2. Dielectric Strength: Core-Winding, AC 3000V/50Hz/5mA, in 10s, free of damage                              |
| 3. 绝缘电阻：铁芯-绕组1000VDC，绝缘阻值 $\geq 100M\Omega$ ，                | 3. Insulation Resistance: Core-Winding, DC 1000V, Resistance $>100M\ \text{ohm}$                             |
| 4. 电抗器噪音：小于65dB(与电抗器水平距离1米测试)；                               | 4. Reactor's noise is less than 65dB(to be measured at the point 1 meter away from the reactor horizontally) |
| 5. 产品执行标准：GB19212.1-2008<br>GB19212.21-2007<br>GB1094.6-2011 | 5. Standard the Product Conforms To:<br>GB19212.1-2008/GB19212.21-2007/GB1094.6-2011                         |

### 产品尺寸图 (Product Size)

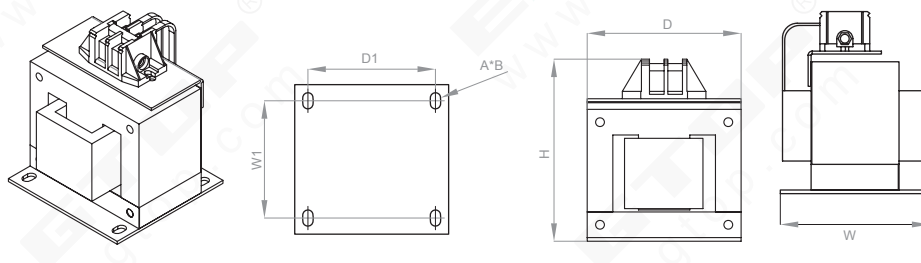


图 A Picture A

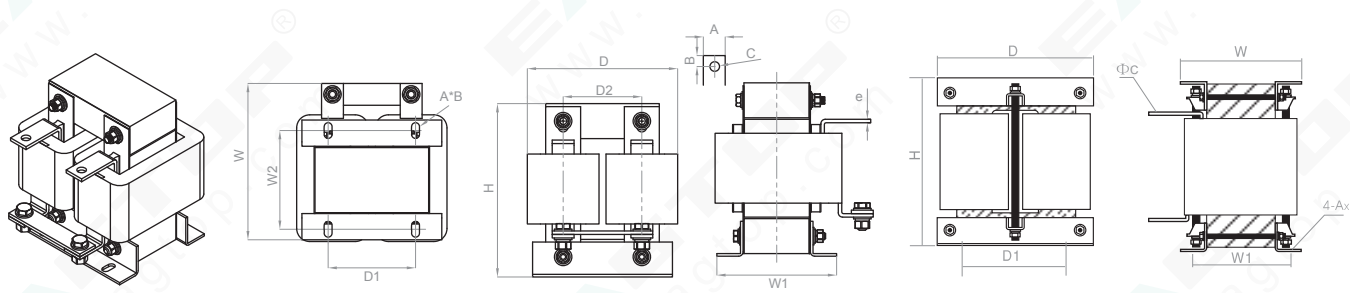


图 B Picture B

图 C Picture C

## 400V级变频器直流电抗器选型表 (DC Reactor Selection for 400V Inverter)

电抗器型号 Reactor Type	图号 Picture NO.	功率 Power	额定电流 Rated Current(A)	绝缘等级 Insulation Class	重量 Weight(kg)	尺寸 Dimension(±5mm)						
						D	D1	W	W1	H	A*B	
DCL-0003-EIDC-E28M	A	0.4	3	F	1.5	80	63	65	47	110	5.4*9	
DCL-0003-EIDC-E28M		0.75	3	F	1.5	80	63	65	47	110	5.4*9	
DCL-0006-EIDC-E11M		1.5	6	F	2.3	80	63	85	60	110	5.4*9	
DCL-0006-EIDC-E11M		2.2	6	F	2.3	80	63	85	60	110	5.4*9	
DCL-0012-EIDC-E6M3		3.7	12	F	3.2	100	80	100	70	125	6*11	
DCL-0012-EIDC-E6M3		4.0	12	F	3.2	100	80	100	70	125	6*11	
DCL-0023-EIDH-E3M6		5.5	23	F	3.8	110	87	120	70	135	6*11	
DCL-0023-EIDH-E3M6		7.5	23	F	3.8	110	87	120	70	135	6*11	
DCL-0033-EIDH-E2M0		11	33	F	4.3	110	87	120	70	135	6*11	
DCL-0033-EIDH-E2M0		15	33	F	4.3	110	87	120	70	135	6*11	
DCL-0040-EIDH-E1M3		18.5	40	F	4.3	110	87	120	70	135	6*11	
DCL-0050-EIDH-E1M1		22	50	F	5.5	120	95	135	85	145	8.4*13	
DCL-0065-EIDH-EM80		30	65	F	7.2	138	111	150	85	170	8.4*13	
DCL-0078-EIDH-EM70		37	78	F	7.5	138	111	150	85	170	8.4*13	
DCL-0095-EIDH-EM54		45	95	F	7.8	138	111	150	85	170	8.4*13	
DCL-0115-EIDH-EM45		55	115	F	9.2	155	125	160	90	195	9*18	
DCL-0160-UIDH-EM36		75	160	F	10	165	100	130	98	215	9*18	
DCL-0180-UIDH-EM33		90	180	F	20	165	100	130	98	215	9*18	
DCL-0250-UIDH-EM26		C	110	250	F	23	210	176	150	115	255	11*18
DCL-0250-UIDH-EM26			132	250	F	23	210	176	150	115	255	11*18
DCL-0340-UIDH-EM17	160		340	F	23	210	176	150	115	255	11*18	
DCL-0460-UIDH-EM09	185		460	F	28	220	191	150	115	280	11*18	
DCL-0460-UIDH-EM09	220		460	F	28	220	191	150	115	280	11*18	
DCL-0650-UIDH-E72U	300		650	F	33	235	206	160	125	280	11*18	

## 690V级变频器直流电抗器选型表 (DC Reactor Selection for 690V Inverter)

电抗器型号 Reactor Type	图号 Picture NO.	功率 Power (KW)	额定电流 Rated Current(A)	电感量 (mH)	绝缘等级 Insulation Class	尺寸 Dimension(±5mm)											
						D	D1	D2	W	W1	W2	H	A*B	e	A	B	C
DCL-0020-EIDA-E5M0	A	15	20	5.0	F	107	77	/	120	82	/	140	8.5*12	/	/	/	/
DCL-0035-EIDA-E3M1		22	35	3.1	F	126	86	/	120	87	/	150	8.5*12	/	/	/	/
DCL-0045-EIDA-E2M2		37	45	2.2	F	122	92	/	120	92	/	160	8.5*12	/	/	/	/
DCL-0072-EIDA-E1M4		45	72	1.4	F	152	122	/	120	97	/	195	8.4*12	/	/	/	/
DCL-0095-UIDA-E1M0	B	55	95	1.0	F	182	90	90	103	145	103	215	12*20	5	25	12.5	11
DCL-0120-UIDA-EM85		75	120	0.85	F	182	90	90	110	155	118	215	12*20	5	25	12.5	11
DCL-0165-UIDA-EM65		90	165	0.65	F	212	110	110	105	140	100	260	12*20	5	25	12.5	11
DCL-0210-UIDA-EM47		132	210	0.47	F	212	110	110	110	145	105	260	12*20	5	25	12.5	11
DCL-0264-UIDA-EM38		160	264	0.38	F	212	110	110	118	160	125	260	12*20	5	30	12.5	11

备注/Note: (1): 公差(Tolerance) D:max D1:±1 D2:±5 W:max W1:±2 W2:±2 H:max,其余未注公差(others)±0.5mm.  
 (2): 此款产品引出排为铝排。 The leading-out terminals of this product are Aluminum terminals.