

1 Product Installation

1.1 Appearance

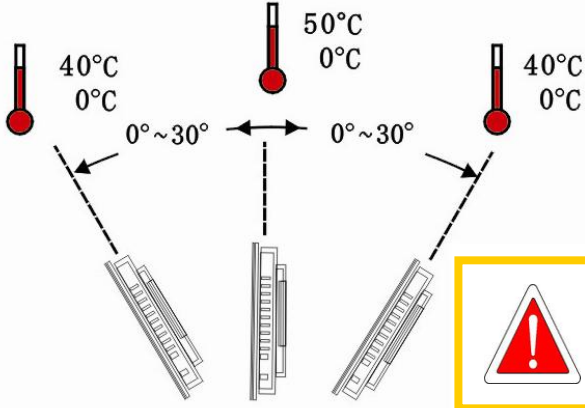
Front view



Rear View

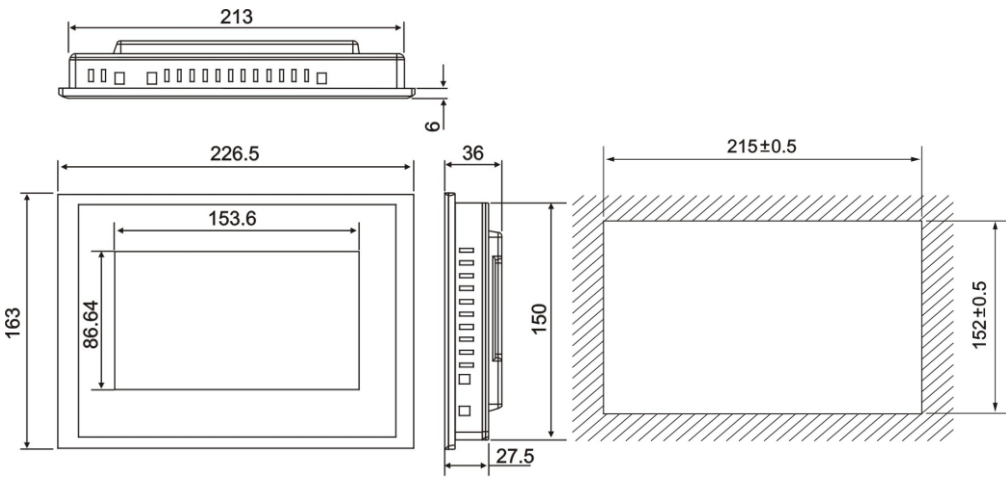


1.2 Product Installation Angle



Installation angle between 0° ~ 30°

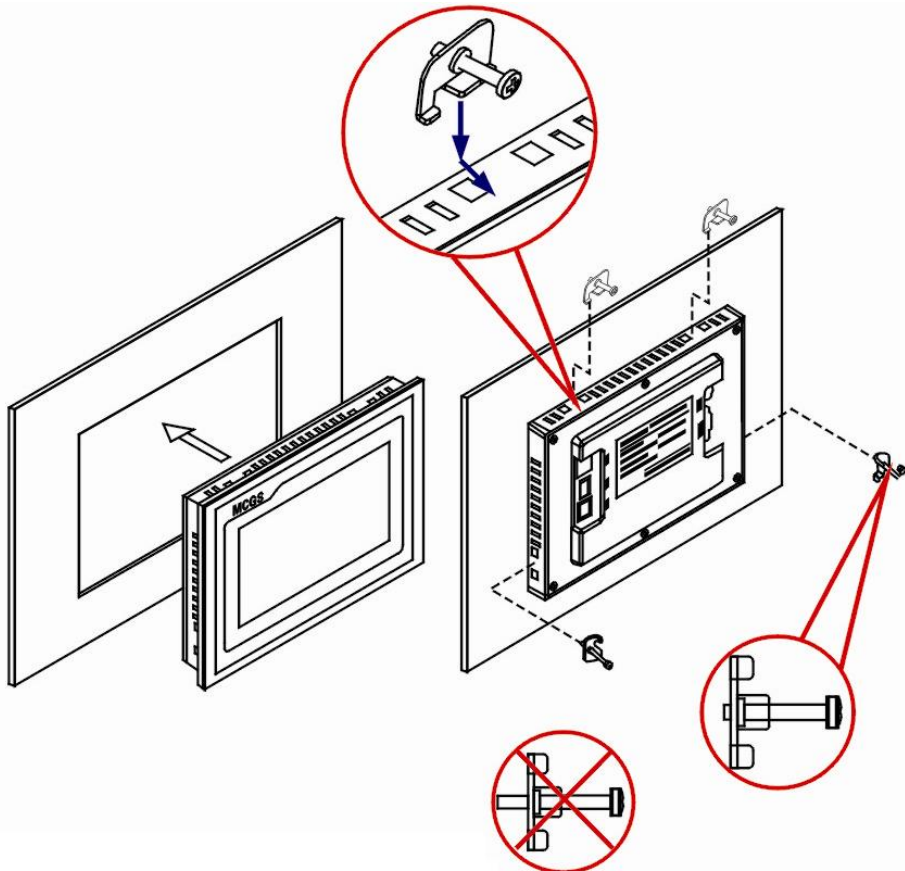
1.3 Outline Dimension(Unit: mm)



Outline Dimensional Drawing

Hole-cutting Size

1.4 Hook Installation Instructions



Note screw before installation needs and linked to the edge of the front flat.

1.5 Power Connection



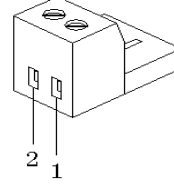
Only 24V DC! Suggestions for the output power supply 15W.

Connection steps:

- Step 1: The 24V power cord into the power plug after stripping in the terminal;
- Step 2: Use the slotted point screwdriver to tighten the power plug;
- Step 3: Input the power plug into the power outlet;

Suggestion: use a diameter of 1.25mm² (AWG18) for power line.

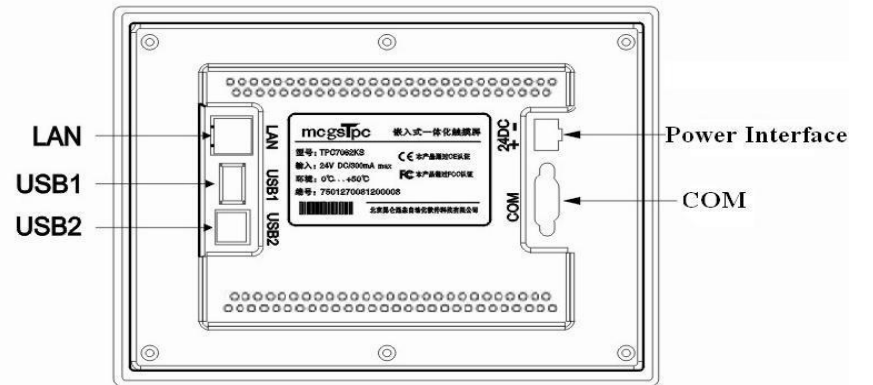
Schematic and pin power plug is defined as follows:



PIN	definition
1	+
2	-

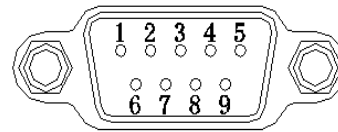
2 External Interface

2.1 Interface Description



Project	TPC7062KS	TPC7062K
LAN(RJ45)	NO	Ethernet interface
Serial ports (DB9)	1×RS232, 1×RS485	
USB1	master port, USB1.1 compatible	
USB2	Slave port, for download the project	
Power Interface	24V DC ±20%	

2.2 Serial Pin Definition

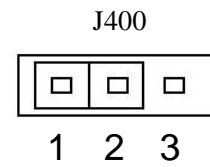


Serial pin definition

PORT	PIN	Pin Definition
COM1	2	RS232 RXD
	3	RS232 TXD
	5	GND
COM2	7	RS485 +
	8	RS485 -

2.3 Serial Port Extension Setting: Terminal Resistor

COM2 description of setting jumper terminal for terminal matching resistor:



Jumper Settings	Terminal matching resistor
	NO
	YES

Description of setting jumper terminal as follows:

- When 1 and 2 positions are linked together, that indicates COM2 RS485 communication port without a matching resistor;
- When 2 and 3 positions are linked together, that indicates COM2 RS485 communication port has a matching resistor;

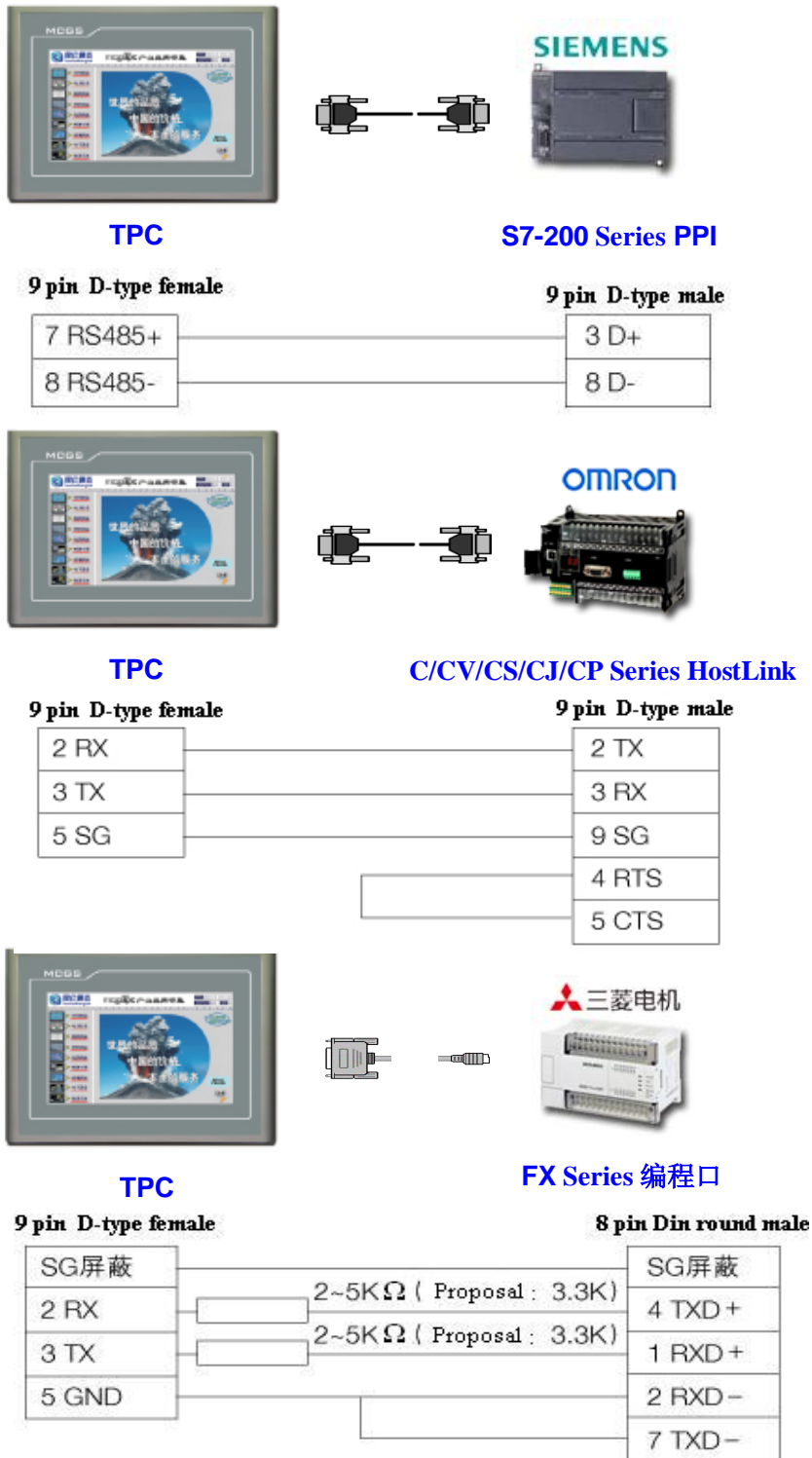
DEFAULT SETUP: No matching resistance pattern.

Jumper Settings step as follows:

- Step 1: Turn off the power, remove the product back cover;
- Step 2: According to required use of the RS485 termination resistor needs to set jumper switches;
- Step 3: Cover the back cover;
- Step 4: Settings take effect after boot.

Default settings: No matching resistance pattern. When RS485 communications distance is more than 20 meters and communications interference occurs then need to consider setting the termination resistor.

2.4 TPC Connection With The PLC



3 Download Project

3.1 Hardware Connection



Connect Type: USB connection

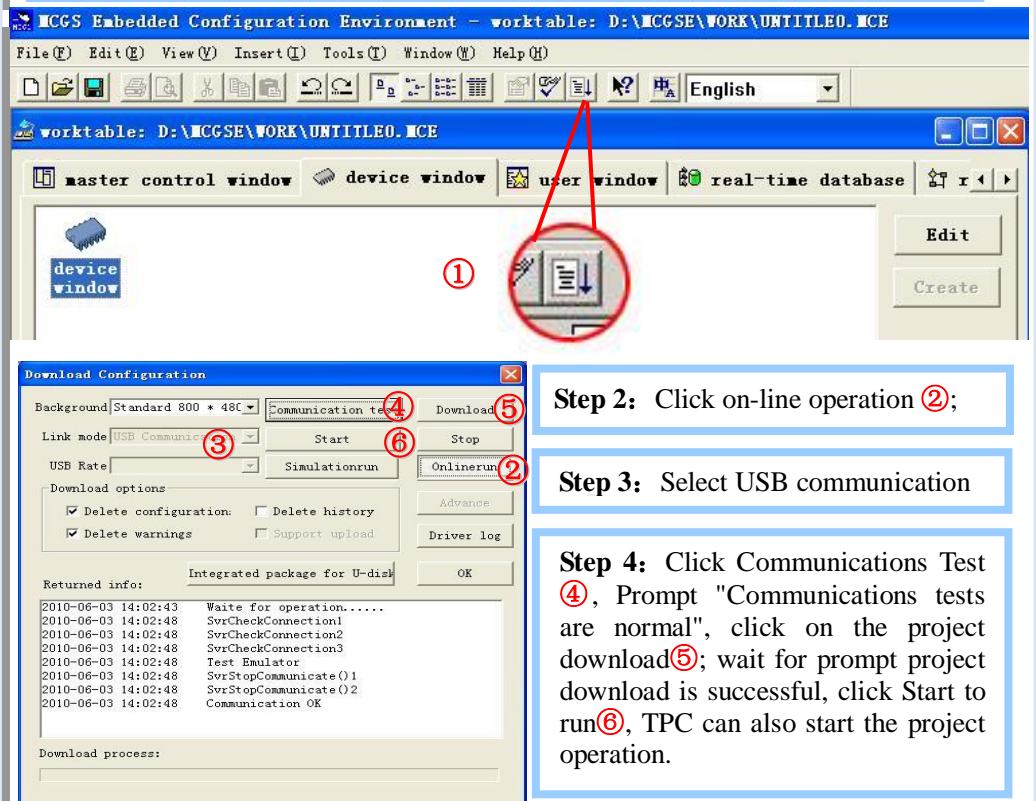
3.2 Start TPC

Using 24V DC power supply to the TPC, boot screen appears after the "start" prompt progress bar, this time without any operation, the system will automatically enter the engineering operation interface.



3.3 Download project

Step 1: Click the download project button ①, and open the download configuration property pages;



Step 2: Click on-line operation ②;

Step 3: Select USB communication

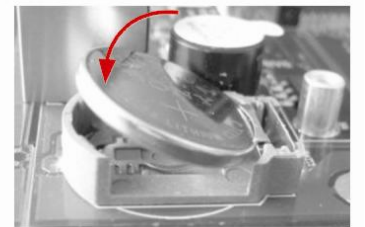
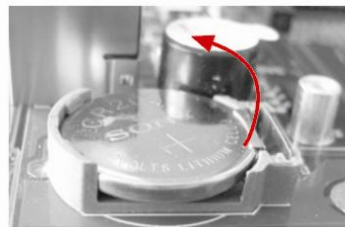
Step 4: Click Communications Test ④, Prompt "Communications tests are normal", click on the project download ⑤; wait for prompt project download is successful, click Start to run ⑥, TPC can also start the project operation.

4 Product Maintenance

4.1 Replacement Battery

Battery location: TPC product internal circuit board

Battery specifications: CR2032 3V lithium battery



4.2 Touch Screen Calibration

Into the touch screen calibration procedures: TPC boot screen appears after the "start" prompt progress bar, this time using the touch pen or finger tap the screen anywhere to enter the boot setup interface. Wait 30 seconds, the system will automatically run the touch screen calibration process. Touch screen calibration: using the touch pen or finger touch in the center of tightly cross cursor when the cursor to the next point after the lift; repeat the action until the prompt "The new calibration settings have been set," tap the screen anywhere out of calibration program.

Tap with the pen light and accurate cursor at the center cross
When the target moves on the screen, repeat the action
Press ESC key to cancel



mcsTpc™

Embedded Integrated Touch Screen
TPC7062K TPC7062KS

Beijing Kunlun Tongtai Automation
Software Technology Co., Ltd

User Manual

Tel: 010-62979682
Fax: 010-62979059
Web: www.mcs.com.cn
E-mail: mcs@mcs.com.cn

Product Installation 1

External Interface 2

Download Project 3

Product Maintenance 4

01/2009

D7601270-AOOX

